

## INSTRUCTION MANUAL

### I. Installation Notice

1. Install water pipes in accordance with this manual. Floor drain should be installed onsite.
2. The product should be installed only after the completion of house interior decoration in case paint or other chemicals erode the mixer surface.
3. Run water to clean pipes so as to get rid of mud, sand or other debris blocked in pipes before installation.
4. If the thread does not match well with the water pipe, please find out the cause first; otherwise a forced connection will damage the product.
5. After installation, check all the joints to ensure they are firmly connected. Turn on and off the water repeatedly to ensure there is no leakage around the joints. After that, the product is ready for normal use. Keep the manual to users.

### II. Operation Notice

1. The product is used at water pressure 0.05~1.0 MPa and water temperature 4~90°C.
2. To avoid using the faucet as handrail, a separate handrail must be installed if needed. Do not hang heavy objects on the mixer.
3. Regularly clean the surface of faucet to keep it bright. Attention: Do not use inappropriate tools such as sharp brushes, rough sponges, scouring pads or corrosive detergent to clean the faucet. It is not recommended to use the detergent sold in the market, because its formula changes frequently. Please clean the faucet with wet cloth and soapy water after usage. Then rinse the soap off with clean water and dry with a soft cotton cloth.
4. Residues of shampoo, shower gel, hair dye, perfume, shaving water, nail polish, toothpaste and other substances may cause damage to the product. Please carefully rinse residues with clean water after use. Also, do not store detergents and chemicals under the product, such place as vanity cabinet of washbasin; otherwise volatile gases will damage the product.
5. Turn on the cold water first, then hot water. Adjust the temperature before use to avoid scald.
6. Do not disassemble the product without help from the professionals.

## INSTRUCTION MANUAL

### I. Installation Notice

1. Install water pipes in accordance with this manual. Floor drain should be installed onsite.
2. The product should be installed only after the completion of house interior decoration in case paint or other chemicals erode the mixer surface.
3. Run water to clean pipes so as to get rid of mud, sand or other debris blocked in pipes before installation.
4. If the thread does not match well with the water pipe, please find out the cause first; otherwise a forced connection will damage the product.
5. After installation, check all the joints to ensure they are firmly connected. Turn on and off the water repeatedly to ensure there is no leakage around the joints. After that, the product is ready for normal use. Keep the manual to users.

### II. Operation Notice

1. The product is used at water pressure 0.05~1.0 MPa and water temperature 4~90°C.
2. To avoid using the faucet as handrail, a separate handrail must be installed if needed. Do not hang heavy objects on the mixer.
3. Regularly clean the surface of faucet to keep it bright. Attention: Do not use inappropriate tools such as sharp brushes, rough sponges, scouring pads or corrosive detergent to clean the faucet. It is not recommended to use the detergent sold in the market, because its formula changes frequently. Please clean the faucet with wet cloth and soapy water after usage. Then rinse the soap off with clean water and dry with a soft cotton cloth.
4. Residues of shampoo, shower gel, hair dye, perfume, shaving water, nail polish, toothpaste and other substances may cause damage to the product. Please carefully rinse residues with clean water after use. Also, do not store detergents and chemicals under the product, such place as vanity cabinet of washbasin; otherwise volatile gases will damage the product.
5. Turn on the cold water first, then hot water. Adjust the temperature before use to avoid scald.
6. Do not disassemble the product without help from the professionals.

## INSTRUCTION MANUAL

### I. Installation Notice

1. Install water pipes in accordance with this manual. Floor drain should be installed onsite.
2. The product should be installed only after the completion of house interior decoration in case paint or other chemicals erode the mixer surface.
3. Run water to clean pipes so as to get rid of mud, sand or other debris blocked in pipes before installation.
4. If the thread does not match well with the water pipe, please find out the cause first; otherwise a forced connection will damage the product.
5. After installation, check all the joints to ensure they are firmly connected. Turn on and off the water repeatedly to ensure there is no leakage around the joints. After that, the product is ready for normal use. Keep the manual to users.

### II. Operation Notice

1. The product is used at water pressure 0.05~1.0 MPa and water temperature 4~90°C.
2. To avoid using the faucet as handrail, a separate handrail must be installed if needed. Do not hang heavy objects on the mixer.
3. Regularly clean the surface of faucet to keep it bright. Attention: Do not use inappropriate tools such as sharp brushes, rough sponges, scouring pads or corrosive detergent to clean the faucet. It is not recommended to use the detergent sold in the market, because its formula changes frequently. Please clean the faucet with wet cloth and soapy water after usage. Then rinse the soap off with clean water and dry with a soft cotton cloth.
4. Residues of shampoo, shower gel, hair dye, perfume, shaving water, nail polish, toothpaste and other substances may cause damage to the product. Please carefully rinse residues with clean water after use. Also, do not store detergents and chemicals under the product, such place as vanity cabinet of washbasin; otherwise volatile gases will damage the product.
5. Turn on the cold water first, then hot water. Adjust the temperature before use to avoid scald.
6. Do not disassemble the product without help from the professionals.

## INSTRUCTION MANUAL

### I. Installation Notice

1. Install water pipes in accordance with this manual. Floor drain should be installed onsite.
2. The product should be installed only after the completion of house interior decoration in case paint or other chemicals erode the mixer surface.
3. Run water to clean pipes so as to get rid of mud, sand or other debris blocked in pipes before installation.
4. If the thread does not match well with the water pipe, please find out the cause first; otherwise a forced connection will damage the product.
5. After installation, check all the joints to ensure they are firmly connected. Turn on and off the water repeatedly to ensure there is no leakage around the joints. After that, the product is ready for normal use. Keep the manual to users.

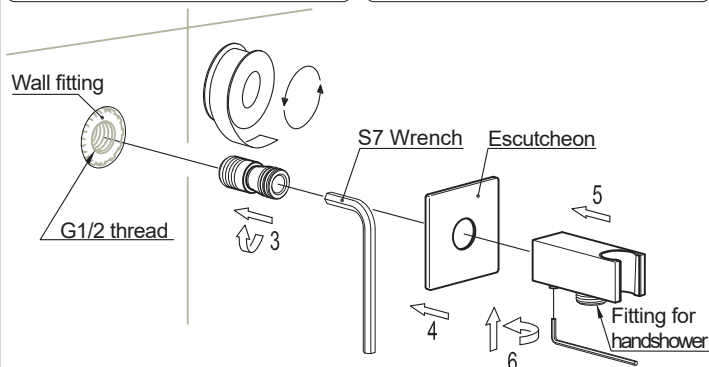
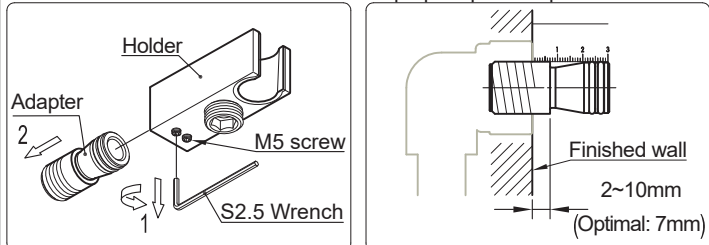
### II. Operation Notice

1. The product is used at water pressure 0.05~1.0 MPa and water temperature 4~90°C.
2. To avoid using the faucet as handrail, a separate handrail must be installed if needed. Do not hang heavy objects on the mixer.
3. Regularly clean the surface of faucet to keep it bright. Attention: Do not use inappropriate tools such as sharp brushes, rough sponges, scouring pads or corrosive detergent to clean the faucet. It is not recommended to use the detergent sold in the market, because its formula changes frequently. Please clean the faucet with wet cloth and soapy water after usage. Then rinse the soap off with clean water and dry with a soft cotton cloth.
4. Residues of shampoo, shower gel, hair dye, perfume, shaving water, nail polish, toothpaste and other substances may cause damage to the product. Please carefully rinse residues with clean water after use. Also, do not store detergents and chemicals under the product, such place as vanity cabinet of washbasin; otherwise volatile gases will damage the product.
5. Turn on the cold water first, then hot water. Adjust the temperature before use to avoid scald.
6. Do not disassemble the product without help from the professionals.

## ■ Installation Steps

BS08192150

1. Install the G1/2 wall fitting in the wall at a suitable height and position. Keep the wall fitting perpendicular to the finished wall, and align the end of wall fitting with the wall, or indented by less than 10mm.
2. Loosen the M5 screws and take the adapter off the holder.
3. Wrap the adapter with teflon tape, then screw them into the wall fitting. Ensure that the distance from the top end of the adapter to the finished wall is 2~10mm. The optimal distance is 7mm.
3. Slip escutcheon and holder over the adapter one by one. Note that the fitting for handshower should face downwards. Then tighten the holder with the M5 screws.
4. Run water to check if the installation is proper upon completion.

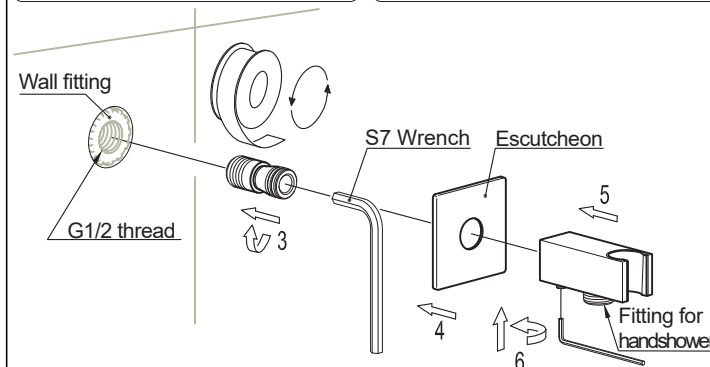
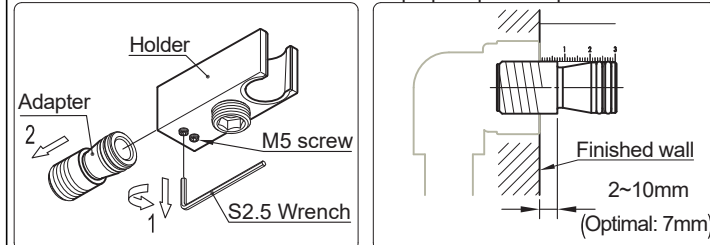


\* The installation diagram is only for reference.  
\* The product is subject to the real object.

## ■ Installation Steps

BS08192150

1. Install the G1/2 wall fitting in the wall at a suitable height and position. Keep the wall fitting perpendicular to the finished wall, and align the end of wall fitting with the wall, or indented by less than 10mm.
2. Loosen the M5 screws and take the adapter off the holder.
3. Wrap the adapter with teflon tape, then screw them into the wall fitting. Ensure that the distance from the top end of the adapter to the finished wall is 2~10mm. The optimal distance is 7mm.
3. Slip escutcheon and holder over the adapter one by one. Note that the fitting for handshower should face downwards. Then tighten the holder with the M5 screws.
4. Run water to check if the installation is proper upon completion.

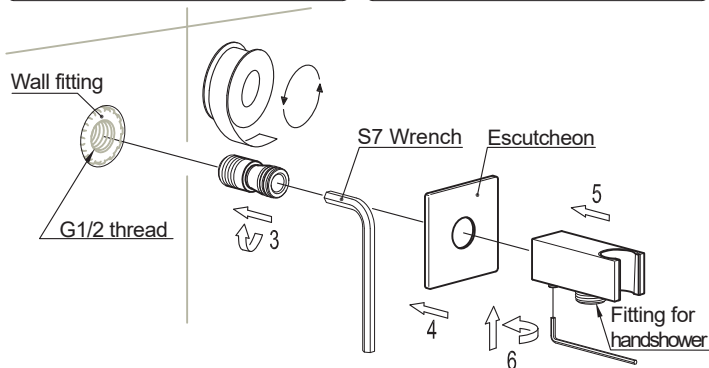
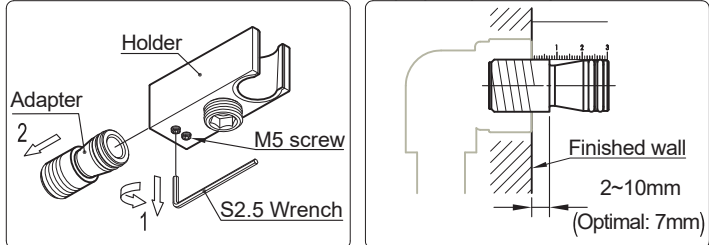


\* The installation diagram is only for reference.  
\* The product is subject to the real object.

## ■ Installation Steps

BS08192150

1. Install the G1/2 wall fitting in the wall at a suitable height and position. Keep the wall fitting perpendicular to the finished wall, and align the end of wall fitting with the wall, or indented by less than 10mm.
2. Loosen the M5 screws and take the adapter off the holder.
3. Wrap the adapter with teflon tape, then screw them into the wall fitting. Ensure that the distance from the top end of the adapter to the finished wall is 2~10mm. The optimal distance is 7mm.
3. Slip escutcheon and holder over the adapter one by one. Note that the fitting for handshower should face downwards. Then tighten the holder with the M5 screws.
4. Run water to check if the installation is proper upon completion.

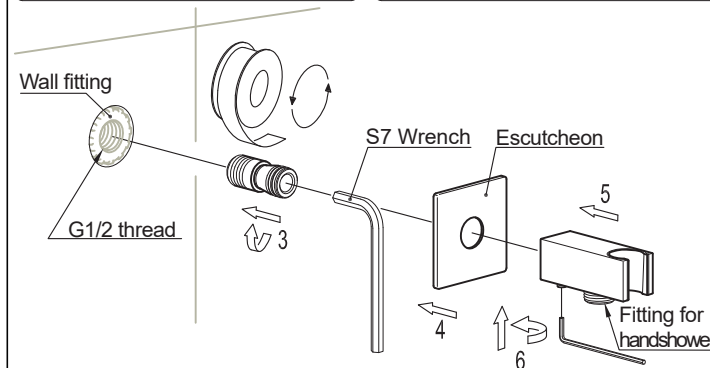
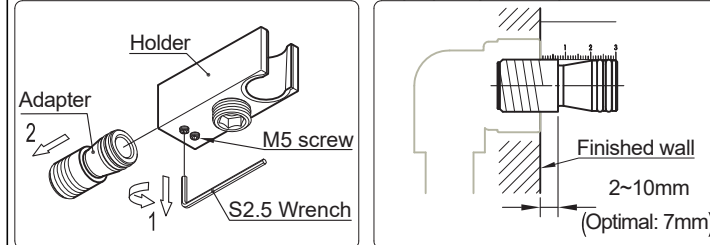


\* The installation diagram is only for reference.  
\* The product is subject to the real object.

## ■ Installation Steps

BS08192150

1. Install the G1/2 wall fitting in the wall at a suitable height and position. Keep the wall fitting perpendicular to the finished wall, and align the end of wall fitting with the wall, or indented by less than 10mm.
2. Loosen the M5 screws and take the adapter off the holder.
3. Wrap the adapter with teflon tape, then screw them into the wall fitting. Ensure that the distance from the top end of the adapter to the finished wall is 2~10mm. The optimal distance is 7mm.
3. Slip escutcheon and holder over the adapter one by one. Note that the fitting for handshower should face downwards. Then tighten the holder with the M5 screws.
4. Run water to check if the installation is proper upon completion.



\* The installation diagram is only for reference.  
\* The product is subject to the real object.