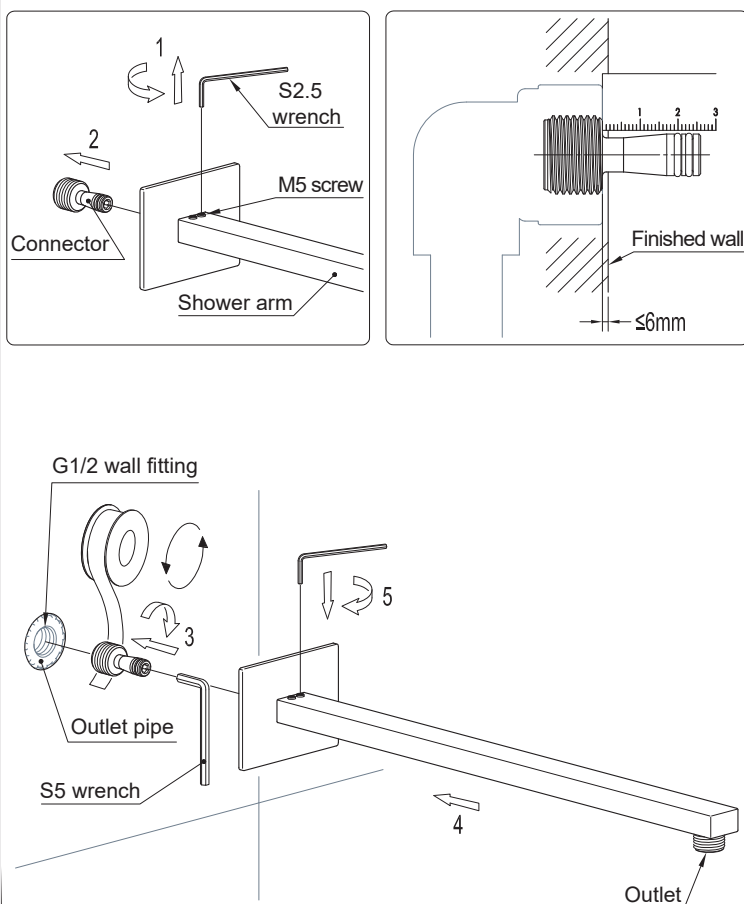


INSTRUCTION MANUAL

BS85132150

■ Installation Diagram



* The installation diagram is only for reference.
The product is subject to the real object.

I. Installation Notice

1. Install water pipes in accordance with this manual.
2. Floor drain should be installed onsite.
3. All the components except mixer body should be installed only after the completion of house interior decoration in case paint or other chemicals erode the mixer surface.
4. Run water to clean pipes so as to get rid of mud, sand or other debris blocked in pipes before installation.
5. If the thread does not match well with the water pipe, please identify the cause first; otherwise a forced connection will damage the product.
6. After installation, check all the joints to ensure they are firmly connected. Turn on and off the water repeatedly to ensure there is no leakage around the joints.
7. Keep the manual to users.

II. Operation Notice

1. The product is used at water pressure 0.05~1.0MPa and water temperature 4~70°C.
2. Do not place heavy objects on the mixer.
3. Regularly clean the surface of product to keep it bright. Attention: Do not use inappropriate tools such as sharp brushes, rough sponges, scouring pads or corrosive detergent to clean the product. It is not recommended to use the detergent sold in the market, because its formula changes frequently. Please clean the product with wet cloth and soapy water after usage. Then rinse the soap off with clean water and dry with a soft cotton cloth.
4. Do not store detergents and chemicals under the product, such place as vanity cabinet of washbasin; otherwise volatile gases will damage the product.
5. Adjust the temperature before use to avoid scald.
6. Do not disassemble the product without help from the professionals.

■ Installation Steps

1. The G1/2 wall fitting should be embedded in the appropriate height and position. Note: The center line of the outlet pipe should be perpendicular to the finished wall, and the outer surface of the outlet pipe should be flush with the finished wall or recessed by no more than 10mm.
2. Loosen the M5 screw and remove the connector from the shower arm.
3. Wrap the connector with teflon tape to connect the G1/2 wall fitting. Make sure the threaded end of the connector is flush with the finished wall or recessed by no more than 6mm.
4. Install the shower arm onto the connector and tighten with the M5 screw. The outlet of the shower arm should be vertically downward.
5. When completed, double check if the installation is proper.