

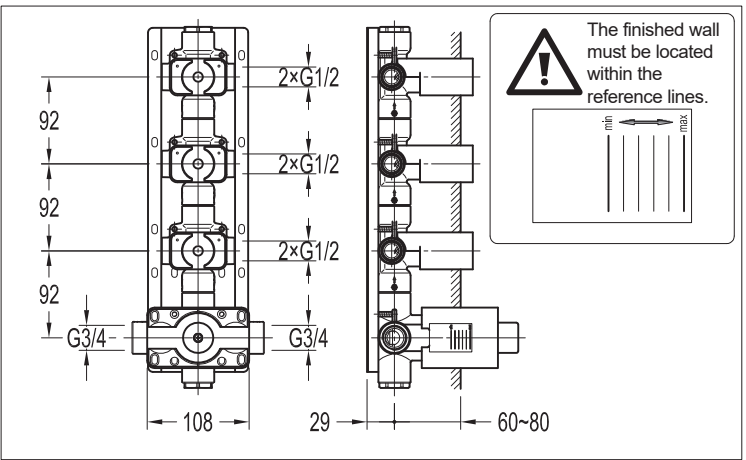
INSTRUCTION MANUAL

BS85072213

I. Installation Notice

1. The product can be installed vertically or horizontally. When installed vertically, the inlets must be connected for hot left and cold right. When installed horizontally, the hot water inlet faces upwards and the cold water inlet downwards.
2. Determine the in-wall depth of the SmartBOX according to the depth label on the SmartBOX. The finished wall must be located within the reference lines.
3. Install water pipes in accordance with this manual. Floor drain should be installed on the site.
4. All the components except mixer body should be installed only after the completion of house interior decoration in case paint or other chemicals erode the mixer surface.
5. Run water to clean pipes so as to get rid of mud, sand or other debris blocked in pipes before installation. Before tiling, run water to perform pressurized test and make sure no leakage after connecting pipes. If the thread does not match well with the water pipe, please identify the cause first; otherwise a forced connection will damage the product.
6. After installation, check all the joints to ensure they are firmly connected. Turn on and off the water repeatedly to ensure there is no leakage around the joints. After that, the product is ready for normal use.
7. Keep the manual to users.

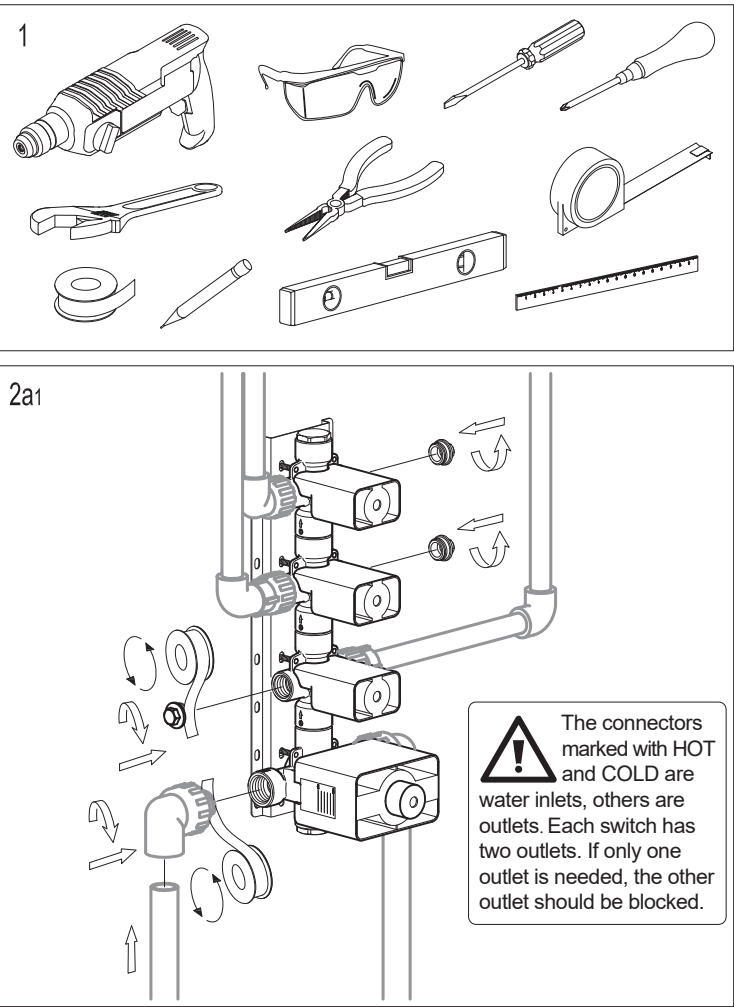
II. Installation Diagram

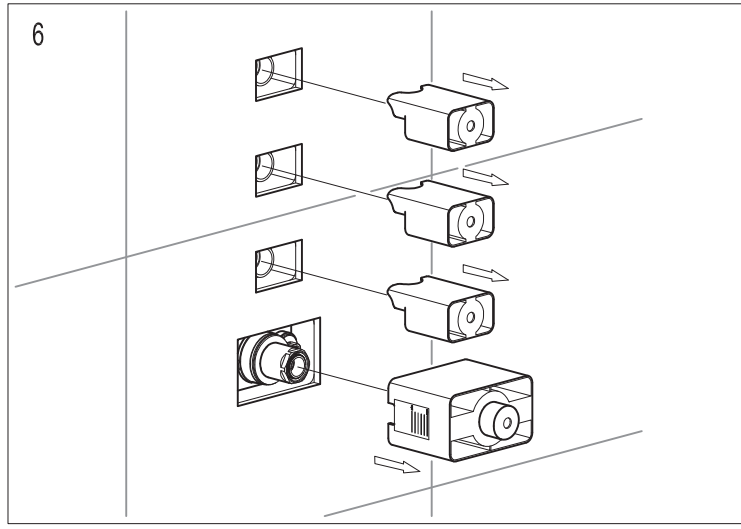
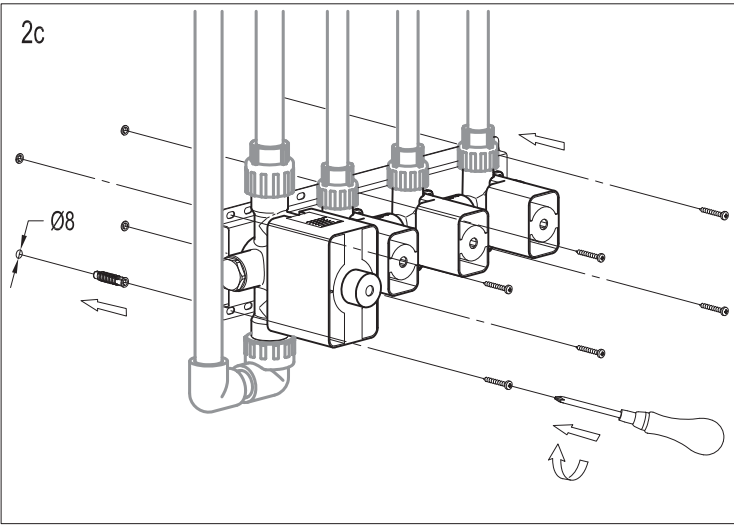
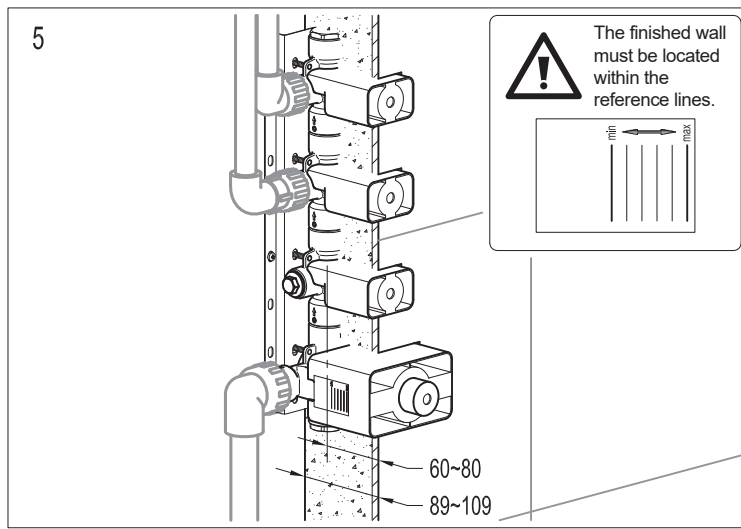
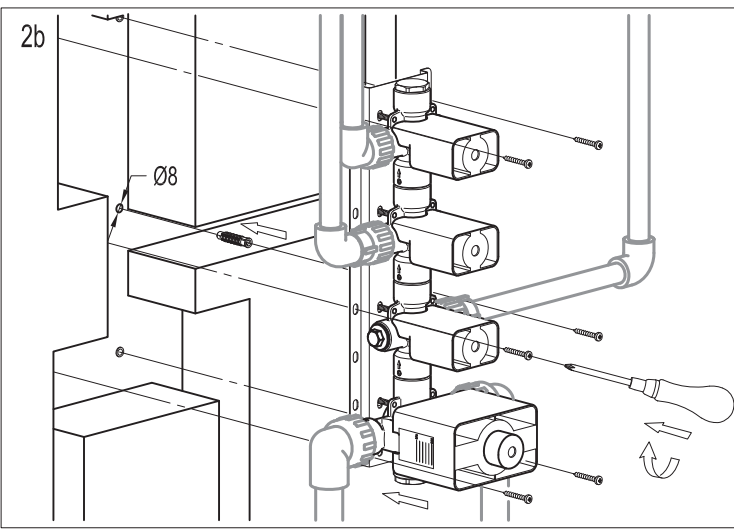
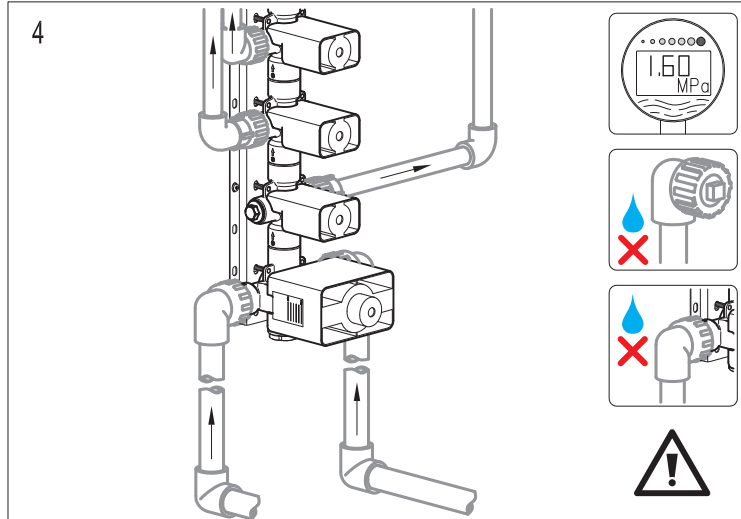
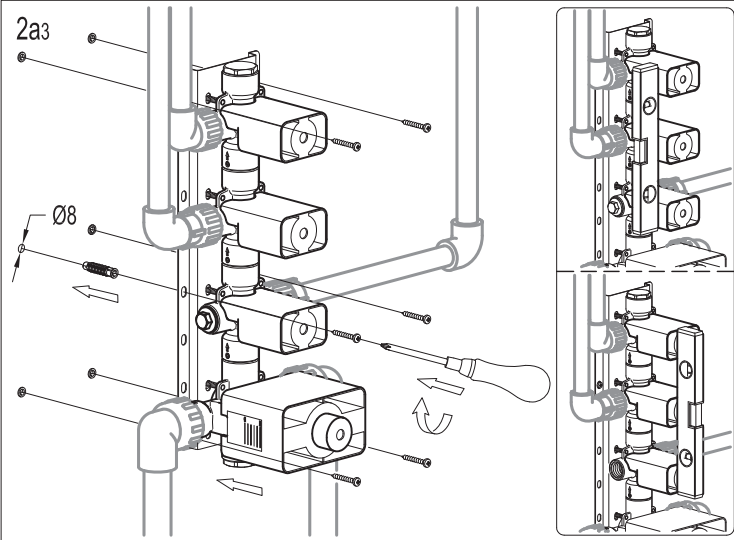
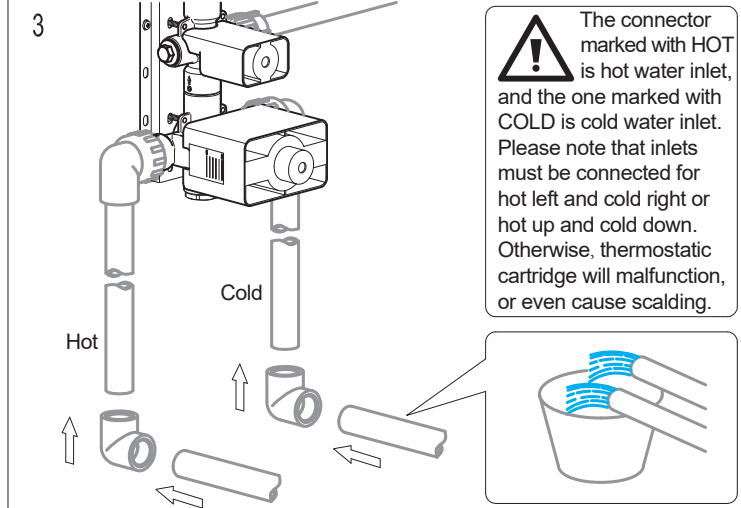
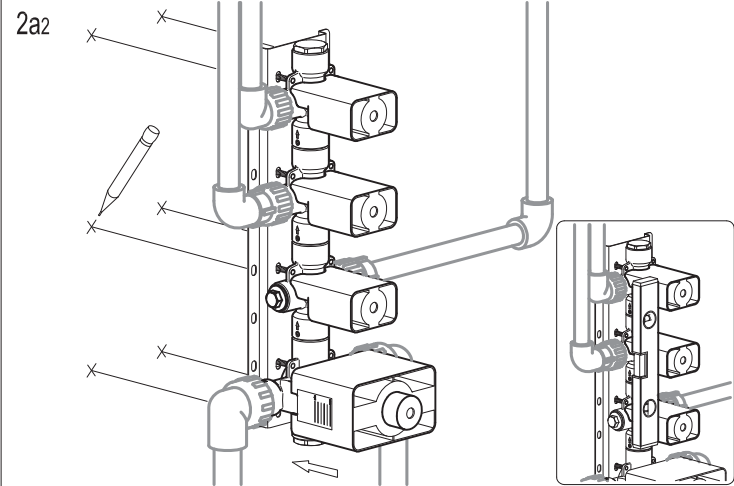


III. Operation Notice

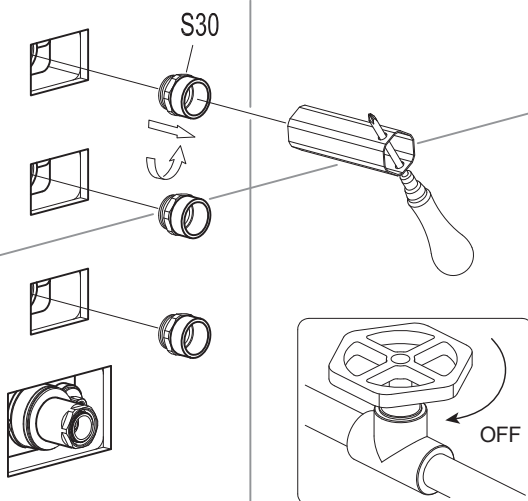
1. The product is used at cold water temperature 4~29°C, hot water temperature 45~85°C and water pressure 0.05 ~1.0MPa. Please avoid large pressure difference between hot and cold water. The thermostatic cartridge is preferably in use at water pressure 0.3MPa, cold water temperature 15°C, hot water temperature 65°C. Main valve should be equipped with a filter.
2. Do not hang heavy objects on the mixer. To avoid using the faucet as hand rail, a separate hand rail must be installed if needed.
3. Make sure the faucet is off when no water comes out of it, especially when nobody resides in or during the period of decoration or suspension of water.
4. Regularly clean the surface of faucet to keep it bright. Attention: Do not use inappropriate tools such as sharp brushes, rough sponges, scouring pads or corrosive detergent to clean the faucet. It is not recommended to use the detergent sold in the market, because its formula changes frequently. Please clean the faucet with wet cloth and soapy water after usage. Then rinse the soap off with clean water and dry with a soft cotton cloth.
5. Residues of shampoo, shower gel, hair dye, perfume, shaving water, nail polish, toothpaste and other substances may cause damage to the product. Please carefully rinse residues with clean water after use. Also, do not store detergents and chemicals under the product, such place as vanity cabinet of washbasin; otherwise volatile gases will damage the product.
6. When room temperature falls below 0°C, take necessary measures (keep the product warm, close windows) to prevent the product from frost cracking, especially when windows open for air ventilation while nobody in the house.
7. Turn on the cold water first, then hot water. Adjust the temperature before use to avoid scald.
8. Children, adults with mental disorders should not be allowed to use the shower system without supervision, nor should people affected by alcohol or drugs.
9. Do not disassemble the product without help from the professionals.

IV. Installation Steps (Fig.1-17): *The installation diagram is only for reference. The product is subject to the real object.

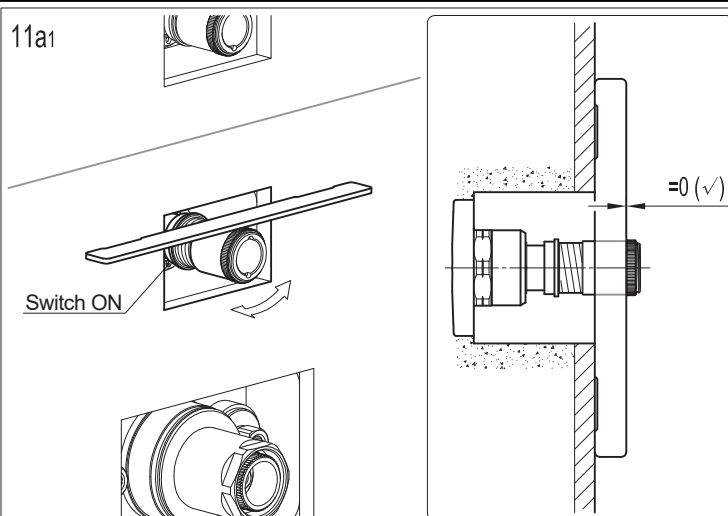




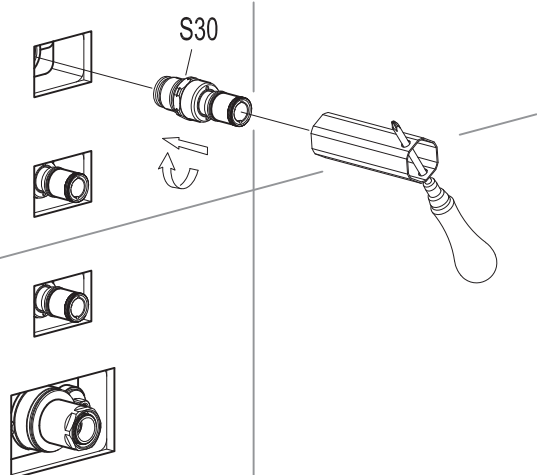
7



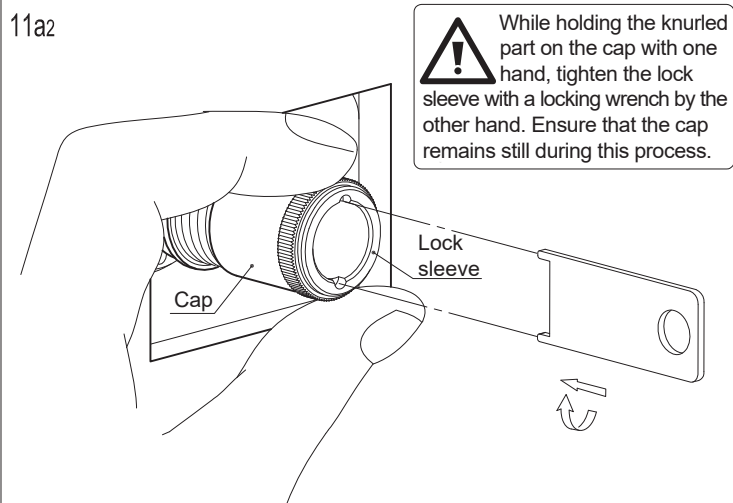
11a1



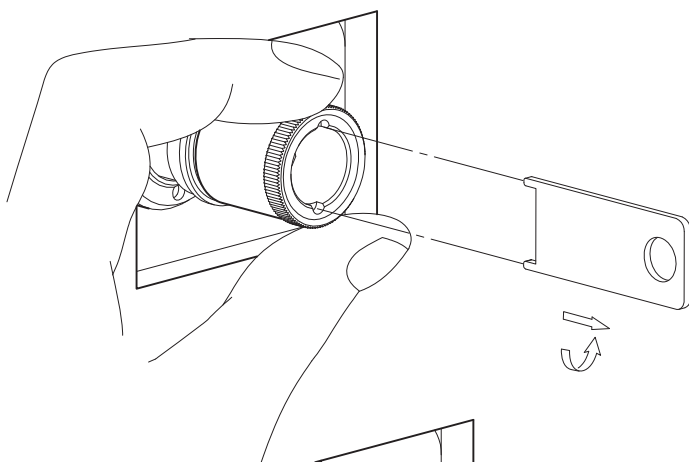
8



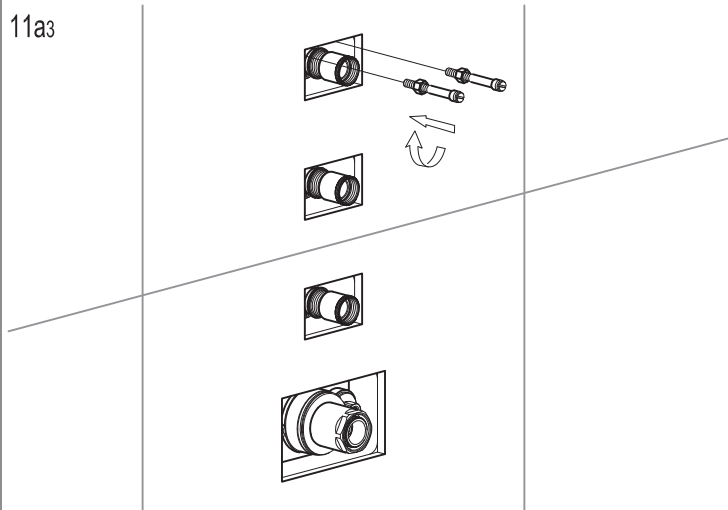
11a2



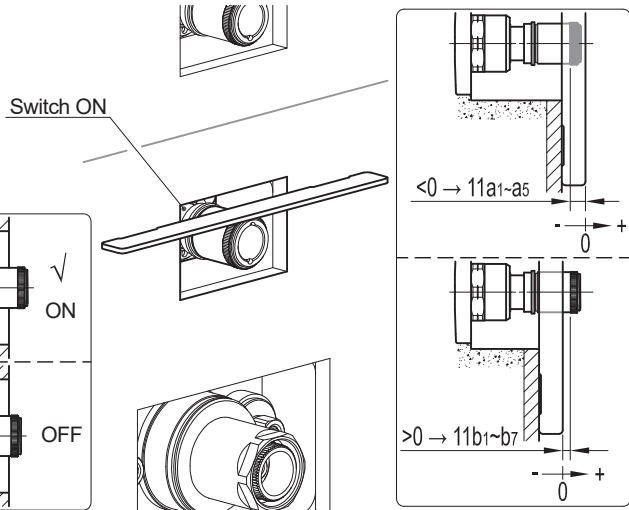
9



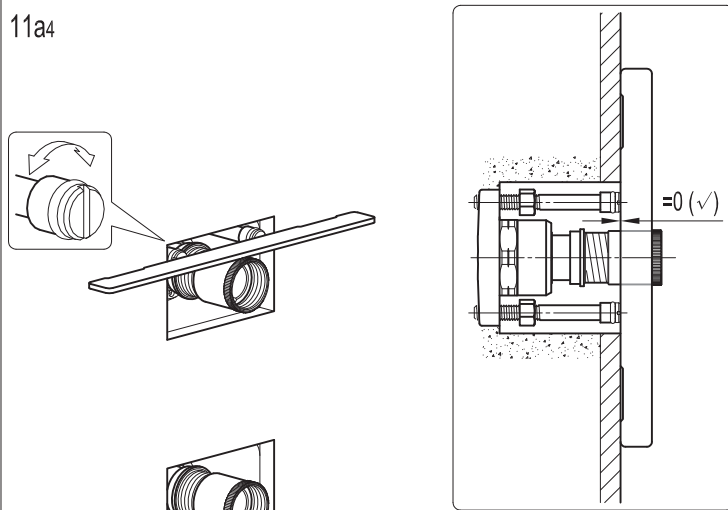
11a3



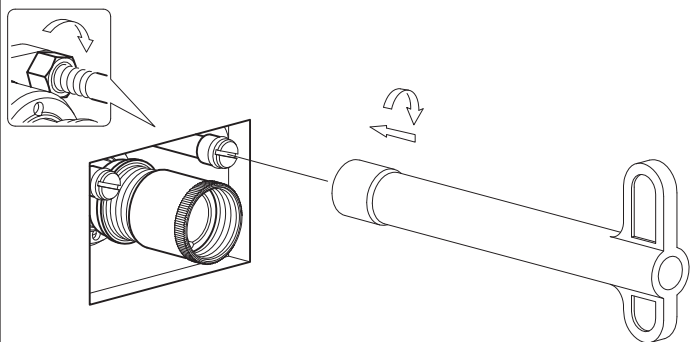
10



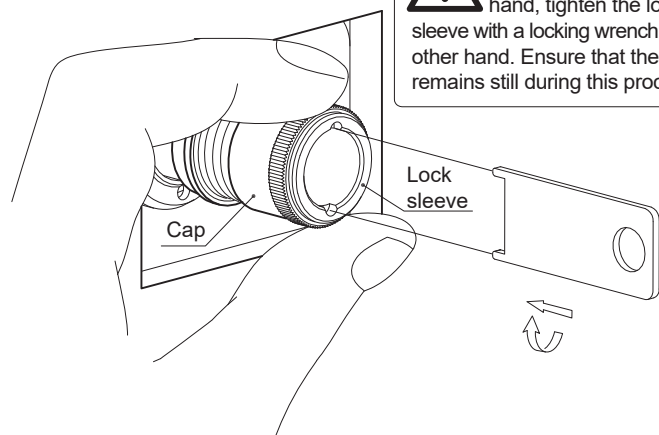
11a4



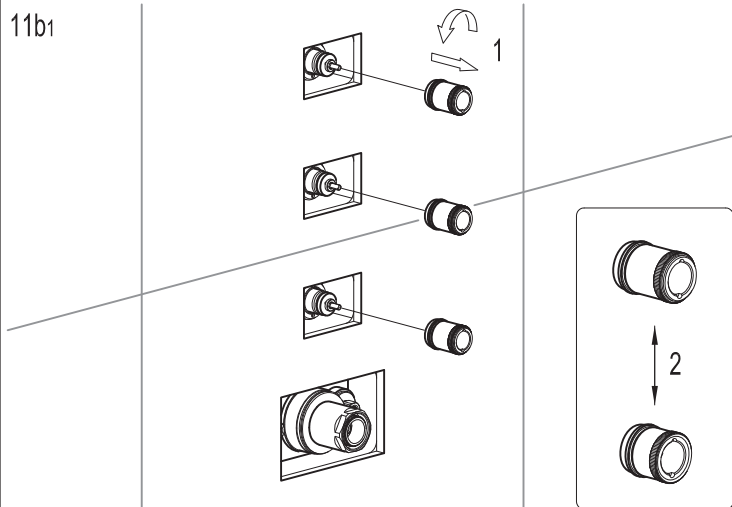
11a5



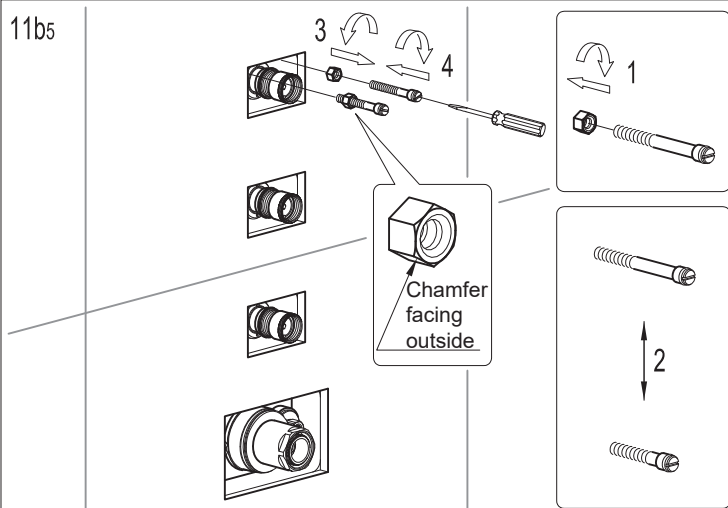
11b4



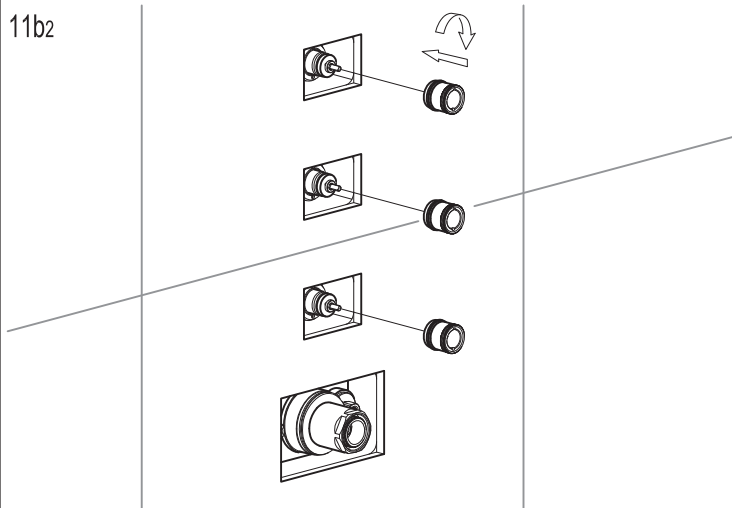
11b1



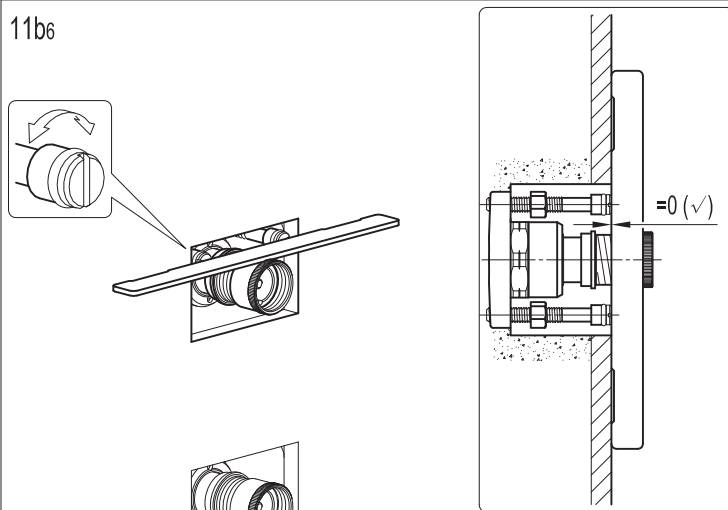
11b5



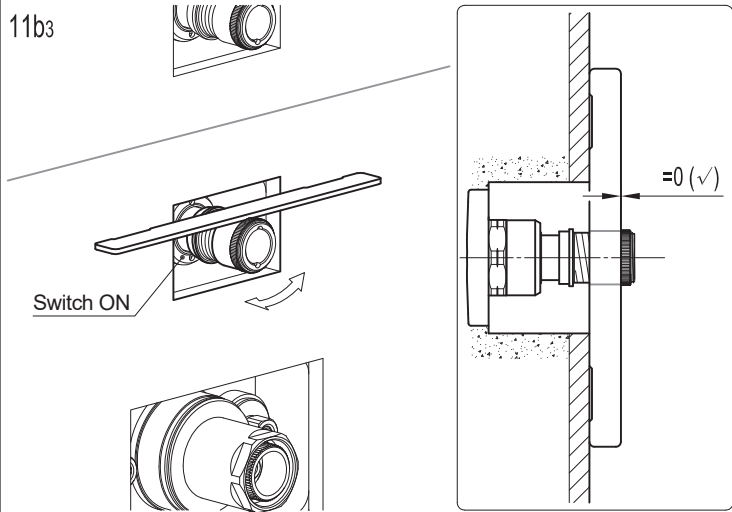
11b2



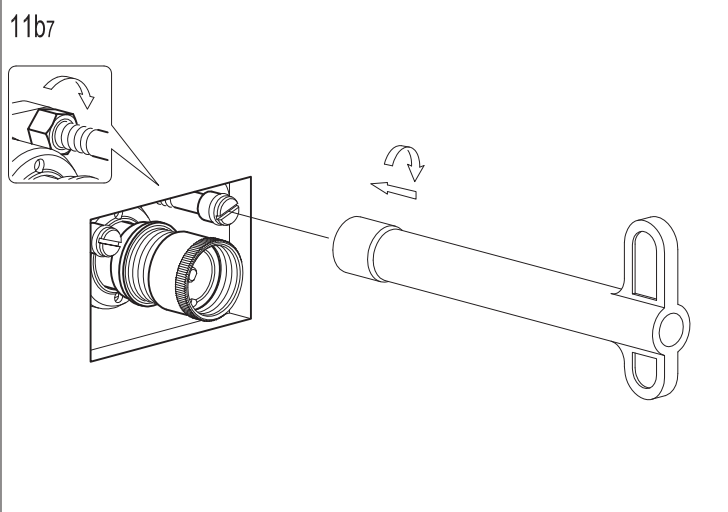
11b6



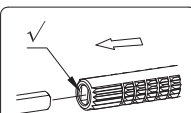
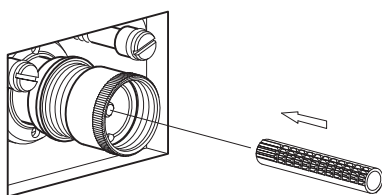
11b3



11b7

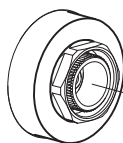


12

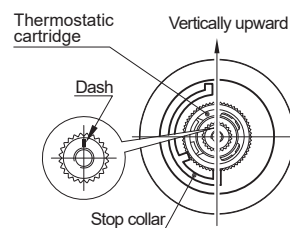


Gently install the connecting rod onto the adjusting rod until it reaches the end.

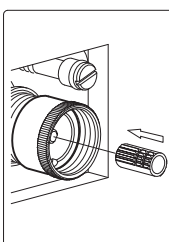
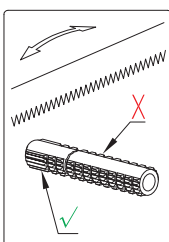
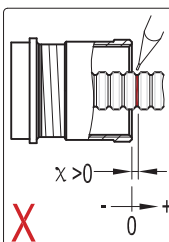
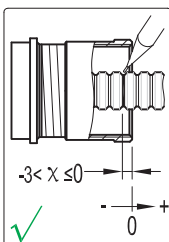
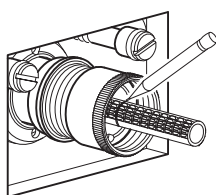
16a1



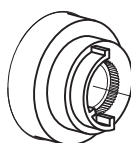
When installed vertically, the stop collar must be installed vertically upward, and aligned with the dash on the thermostatic cartridge.



13



16a2

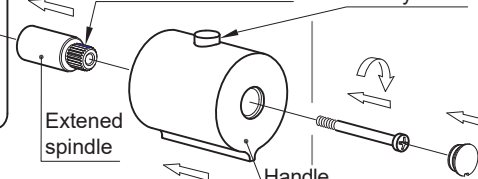


Vertically upward

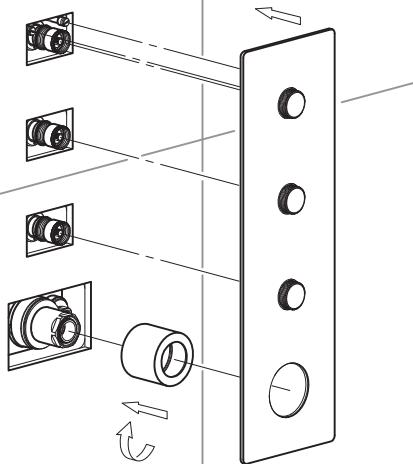


When installed vertically, the safety button on the handle must be installed vertically upward, and aligned with the stop collar and dash on the thermostatic cartridge.

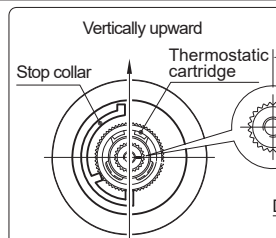
The dash mark on the extended spindle should be aligned with the dash on the thermostatic cartridge



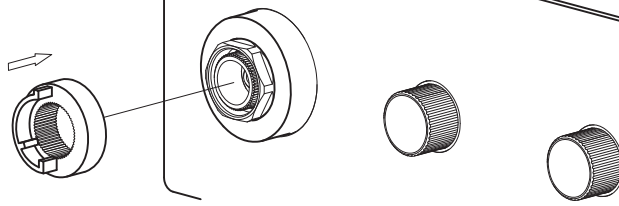
14



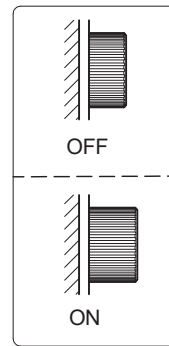
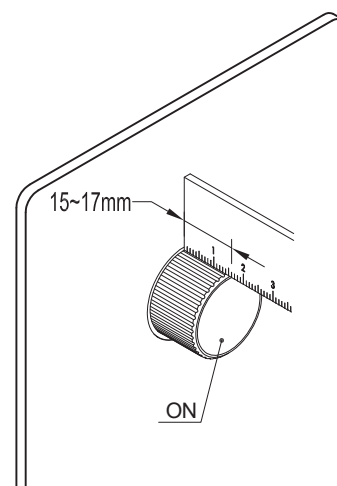
16b1



When installed horizontally, the stop collar must be installed vertically upward, and perpendicular to the dash on the thermostatic cartridge.



15



16b2

Vertically upward



When installed horizontally, the stop collar must be installed vertically upward, and perpendicular to the dash on the thermostatic cartridge.

The dash mark on the extended spindle should be aligned with the dash on the thermostatic cartridge

