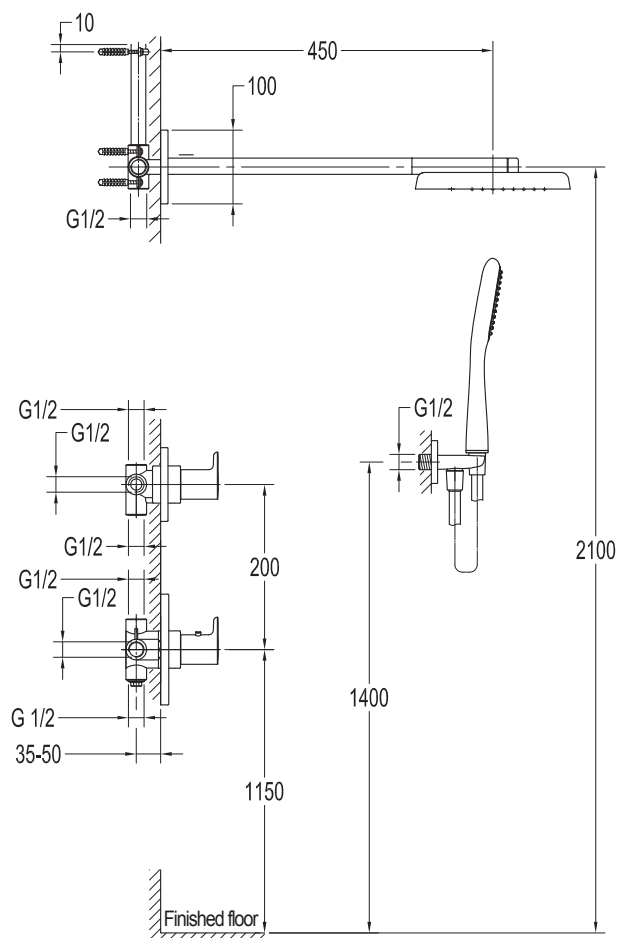


# INSTRUCTION MANUAL

BS03451224

## III Installation diagram



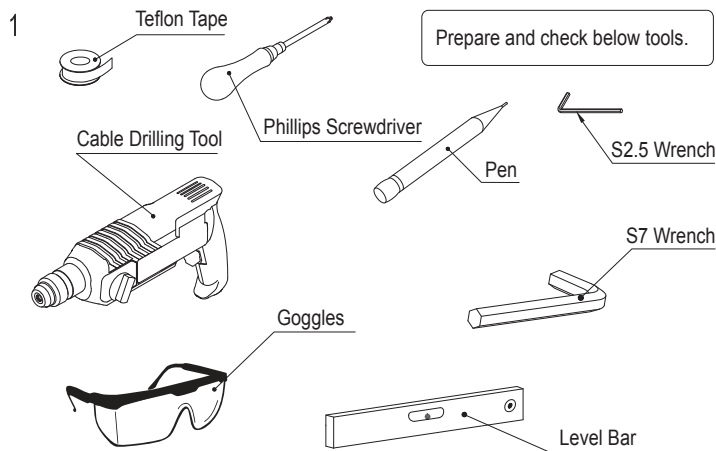
## I Installation Notice

1. Install water supply lines in accordance with this manual.
2. Floor drain should be installed in the location of the faucet.
3. Except the valve body, all the exposed parts of faucets must be installed only after the completion of house interior decoration in case paint or other chemicals erode the faucets surface. Before that the protection sheath on the valve body can't be taken off.
4. Clean pipes to get rid of mud, sand or other debris blocked in pipes.
5. Check whether the threads can be matched. Otherwise, too strong force applied to the wrench will damage the faucet.
6. After installation, check all the joints to make sure they are firmly connected. Then keep water flow. Turn on and off repeatedly to ensure there is no leakage around the joints. At this stage, the product is ready for normal use.
7. Keep the manual to the user.

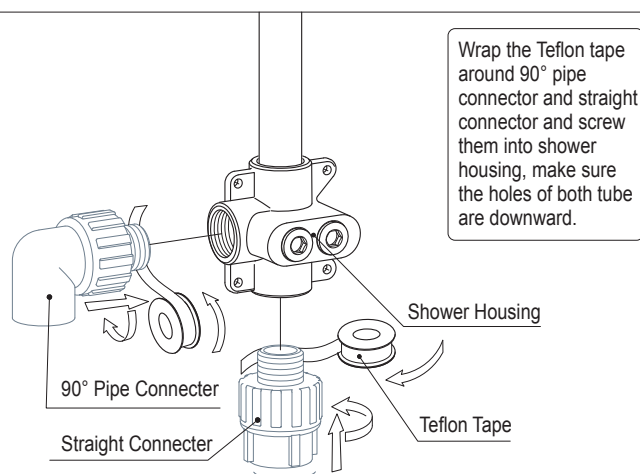
## II Operation Notice

1. The work condition for use of this product is cold water 4~29°C, hot water 55~85°C and water pressure 0.05~1.0Mpa. To avoid the high differential pressure between hot water and cold water, the thermostatic cartridge is preferably under the condition of water 0.3MPa, hot water 65°C and cold water 15°C.
2. Do not hang heavy things on the faucet.
3. Make sure the faucet is off when no water comes out of it (especially when nobody resides in the house or during the period of decoration or the absence of water).
4. Always clean the surface of faucet to keep it bright. Attention: Please do not use inappropriate tools like sharp brushes, rough sponges, scouring pads or corrosive detergent to clean the faucet, and we do not recommend that you use the detergent sold in the market, because it's formula is changing frequently. Please clean the faucet by wet cloth and soapy water after each time of usage. Then rinse the soap out with clean water and dry with soft cotton cloth.
5. When the room temperature drops to below 0°C, take necessary measures (such measures as keeping faucet warm and closing windows) to prevent the faucet from being frozen and even broken (especially when windows kept open for air ventilation while nobody resides in).
6. Adjusting the water temperature when using the faucet to avoid scalding.
7. Do not disassemble the product unless you are an expert.

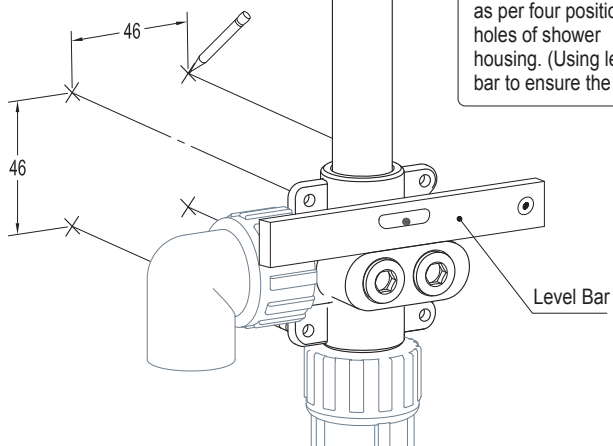
## IV Installing Steps



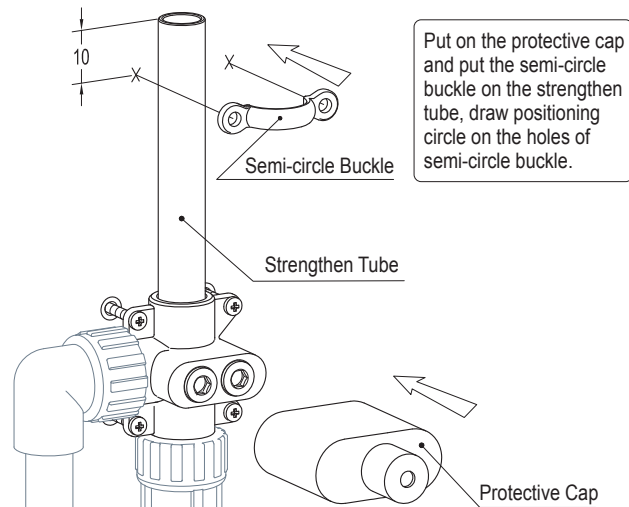
2



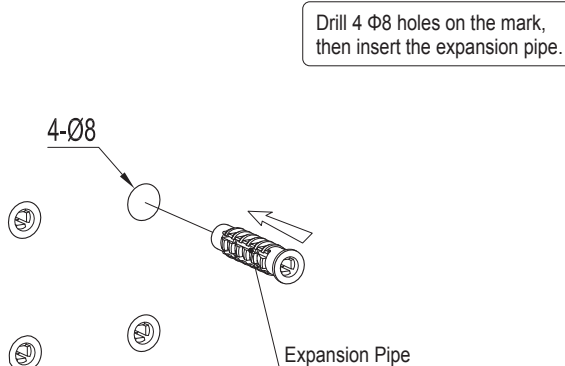
3



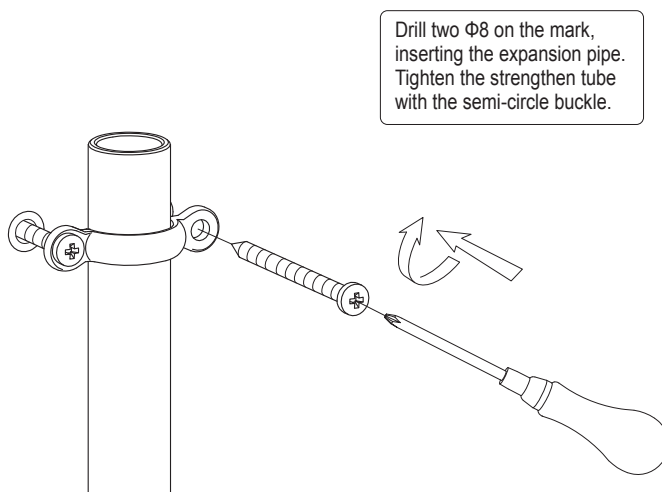
7



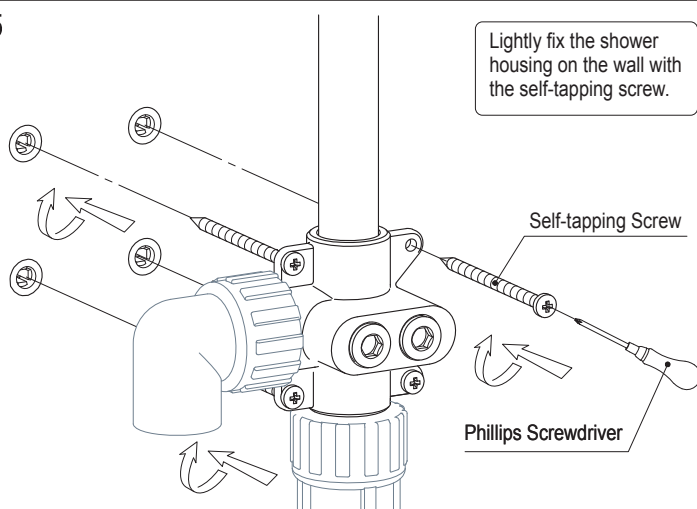
4



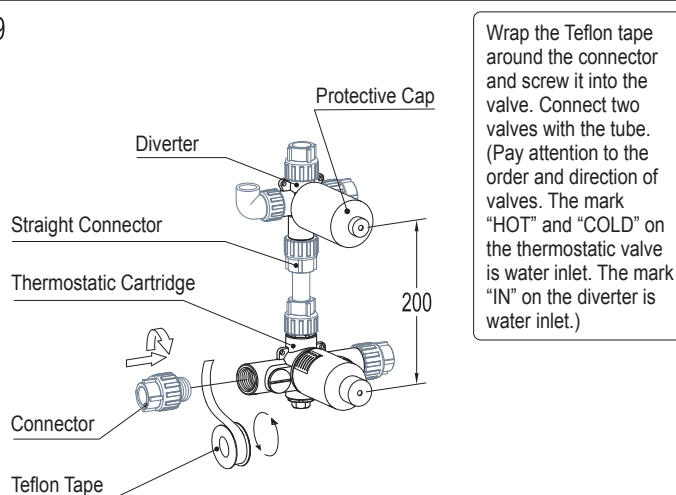
8



5

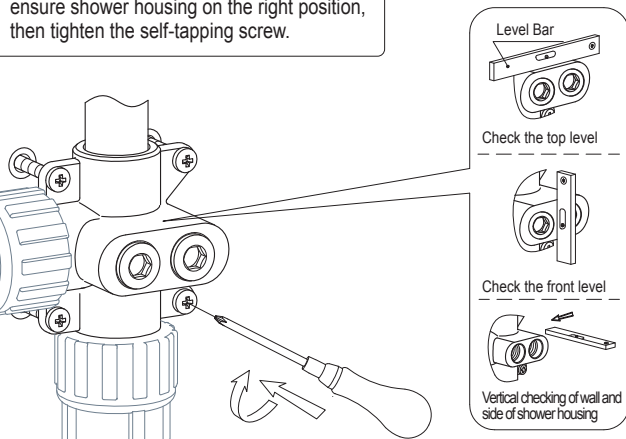


9

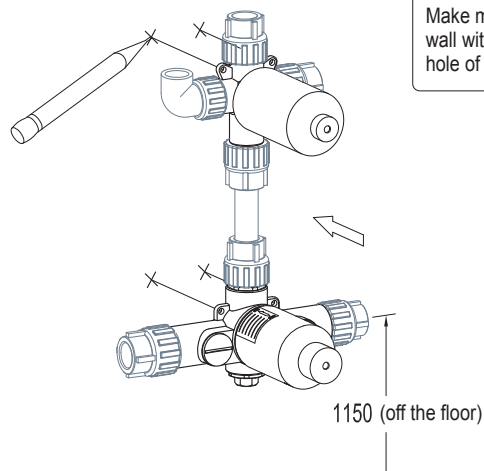


6

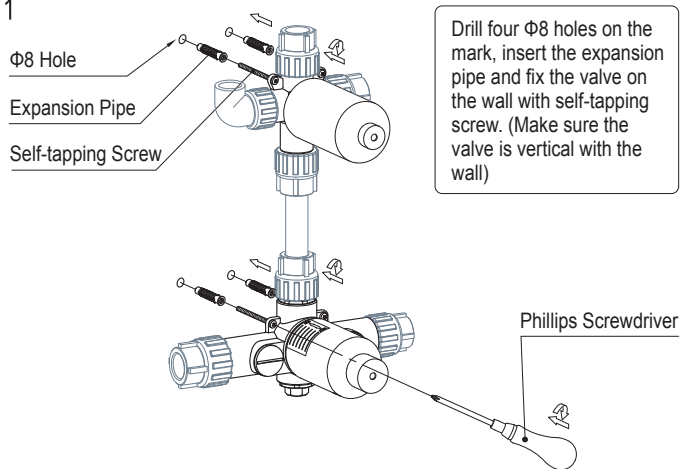
Check the shower housing with level bar to ensure shower housing on the right position, then tighten the self-tapping screw.



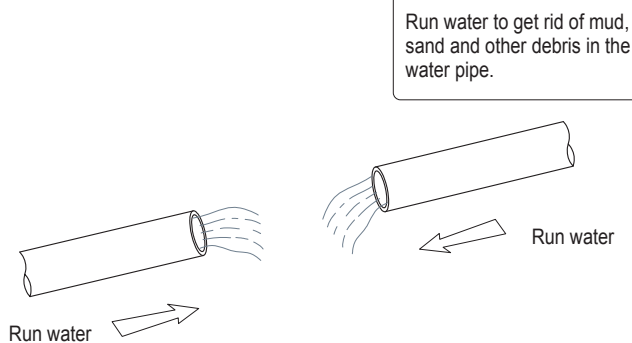
10



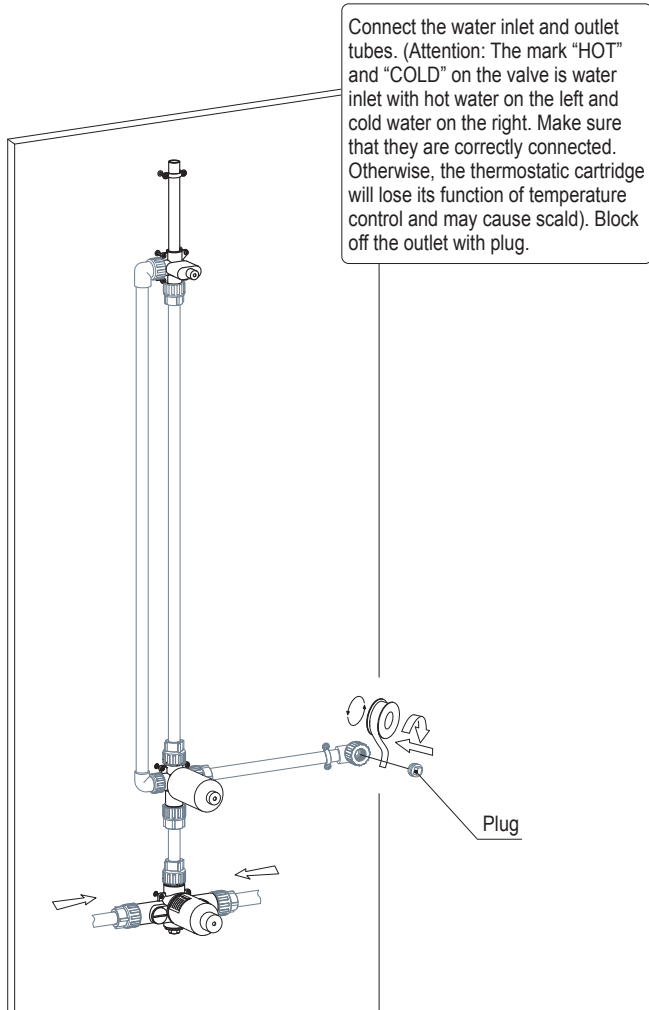
11



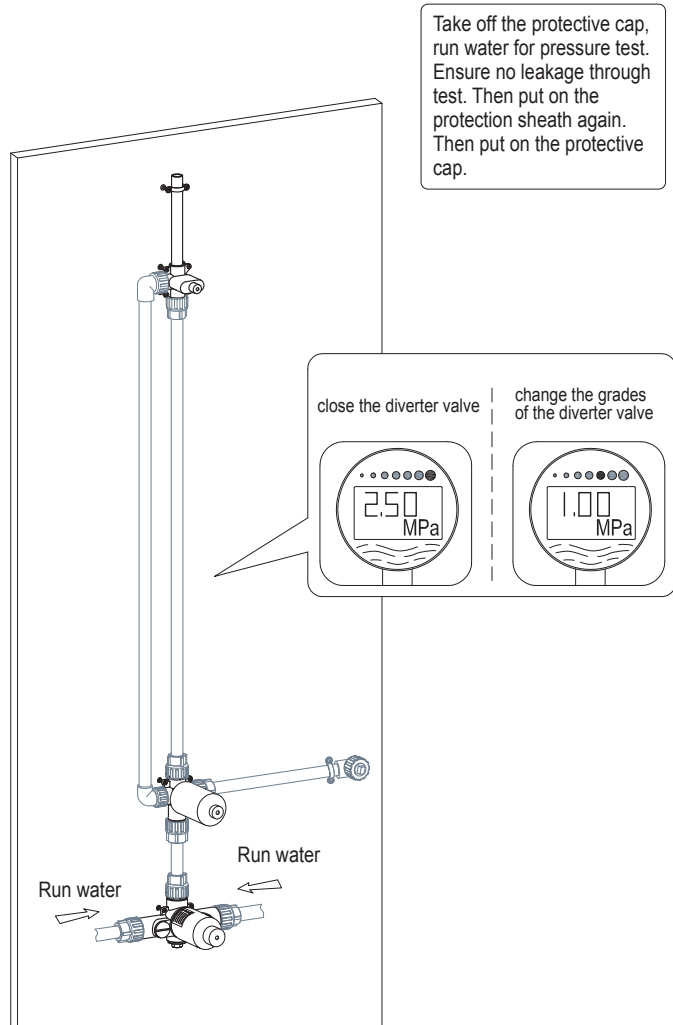
12



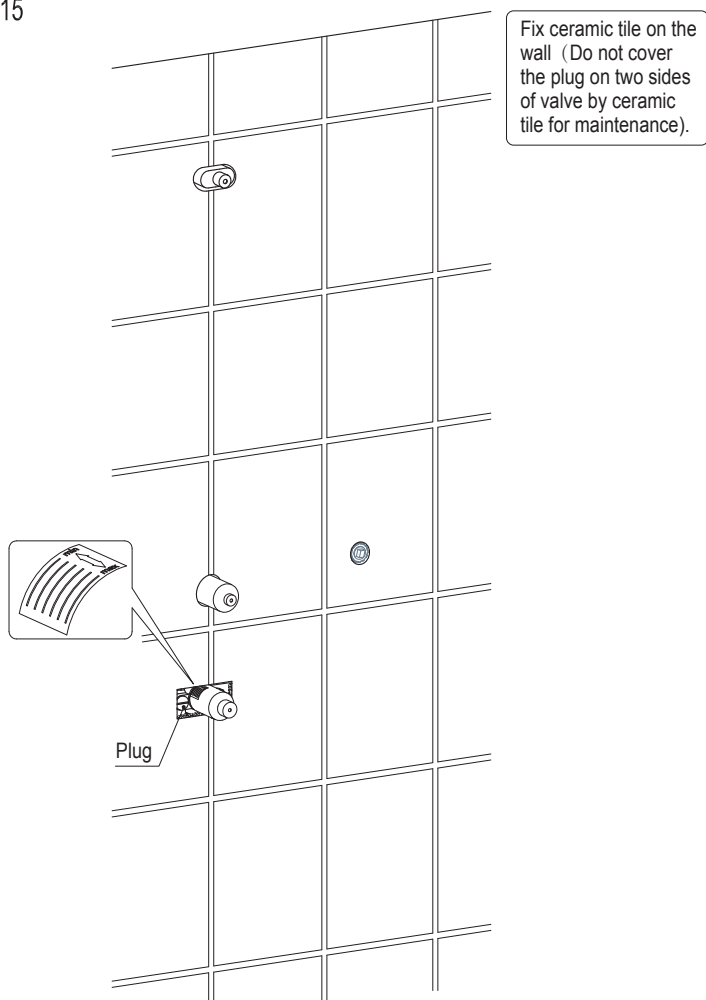
13



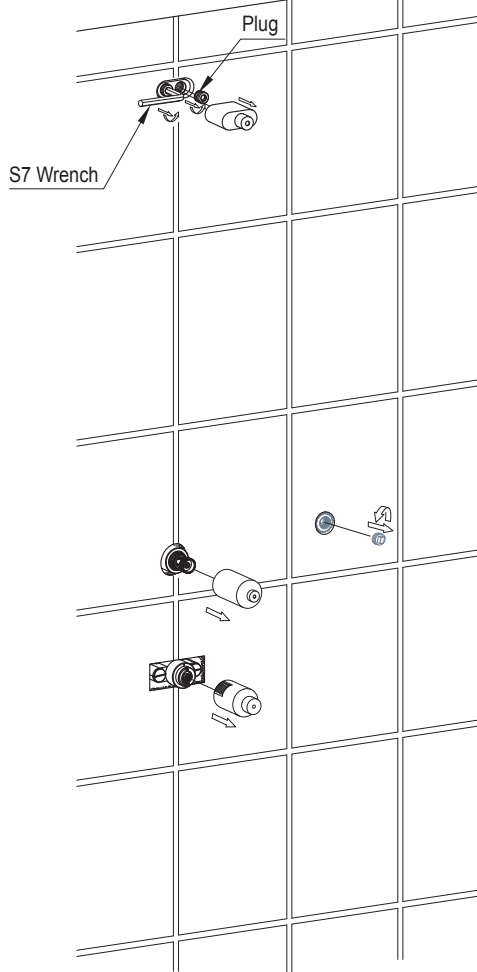
14



15

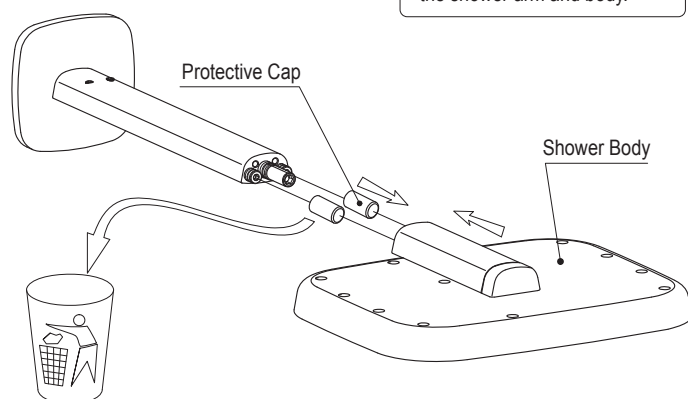


16



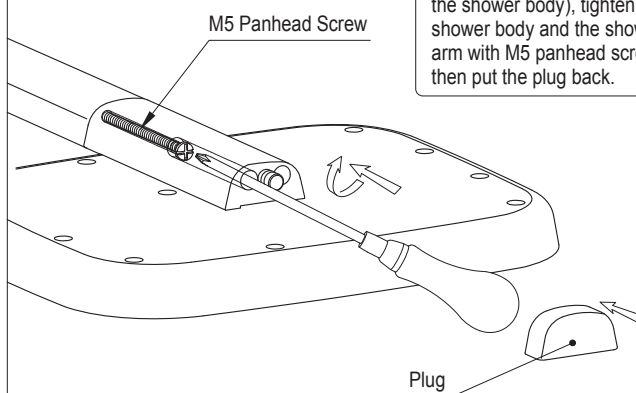
Take off the protective cap and plug.

19



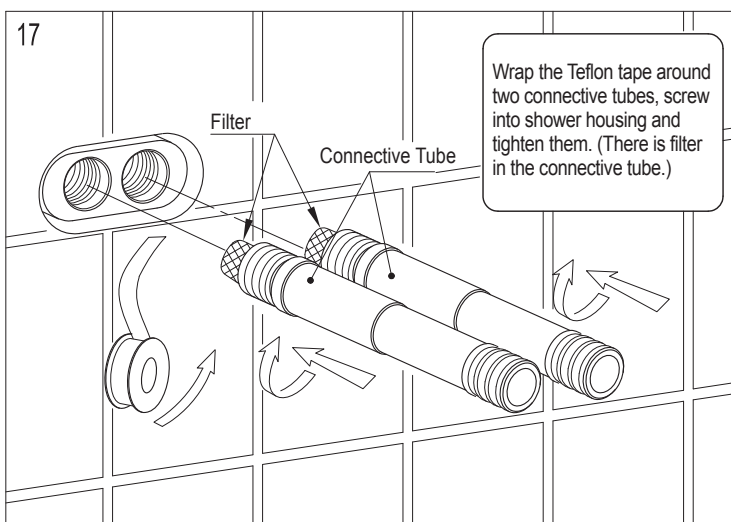
Take off the protective cap from the shower arm, connect the shower arm and body.

20



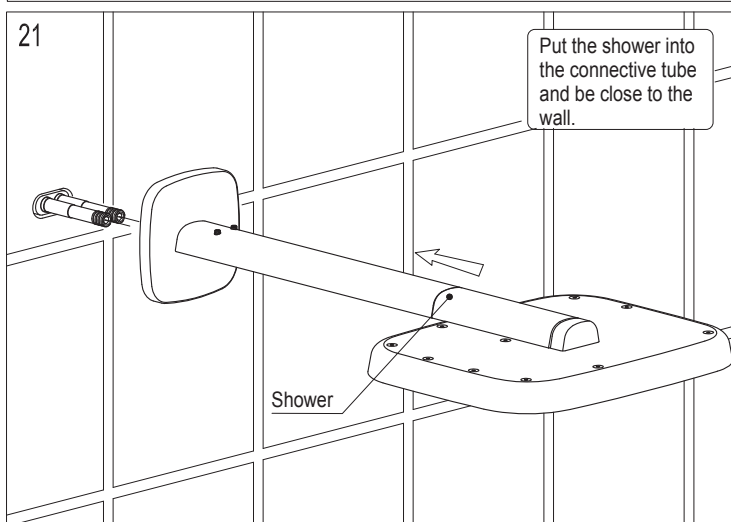
Take off the plug (do not scratch the shower body), tighten the shower body and the shower arm with M5 panhead screw, then put the plug back.

17



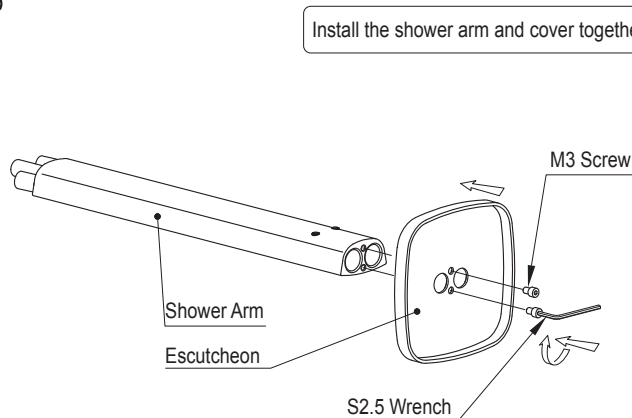
Wrap the Teflon tape around two connective tubes, screw into shower housing and tighten them. (There is filter in the connective tube.)

21



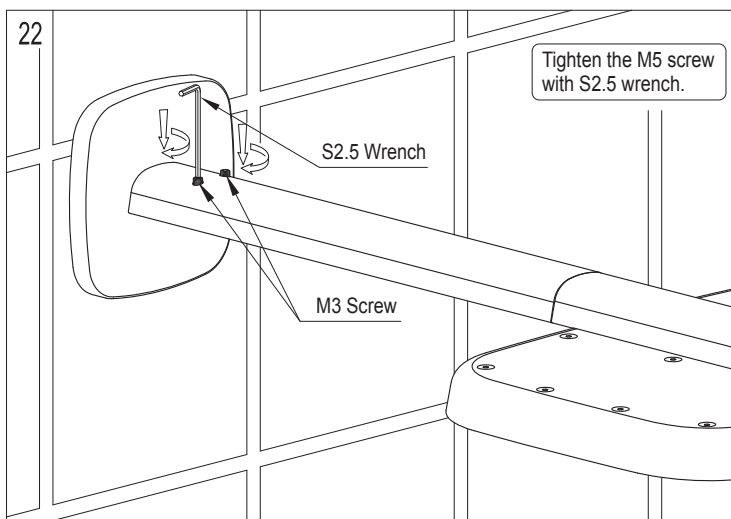
Put the shower into the connective tube and be close to the wall.

18



Install the shower arm and cover together.

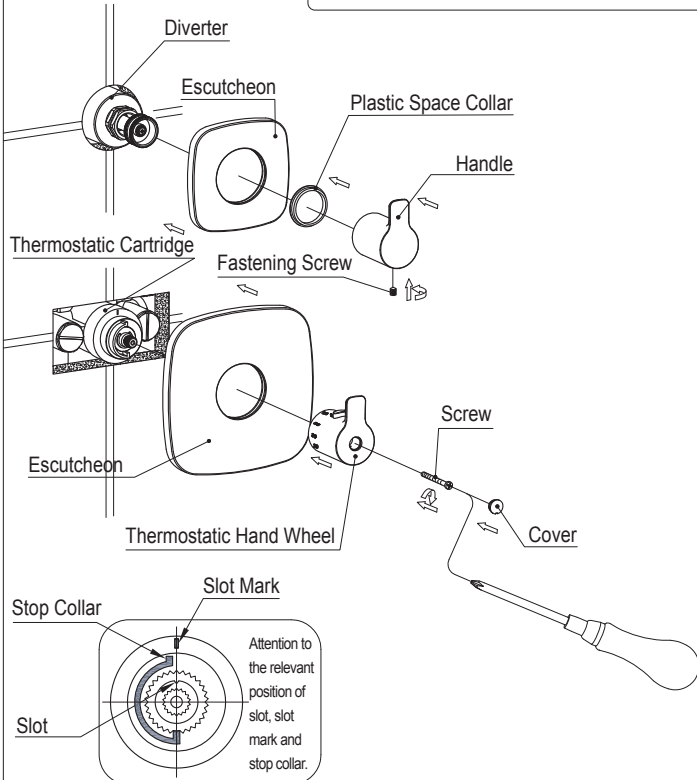
22



Tighten the M5 screw with S2.5 wrench.

23

1. Put the cover on the thermostatic valve, use the hang screw to tighten the thermostatic hand wheel to the valve. (the slot, slot mark, stop collar and the 38 °C mark should be in the line.)
2. Put the small decorative cap, plastic space collar and the hand wheel on the diverter, and tighten them with the locking screw.



26

Turn the top handle to downward, switch to the waterfall outlet.

Top Handle

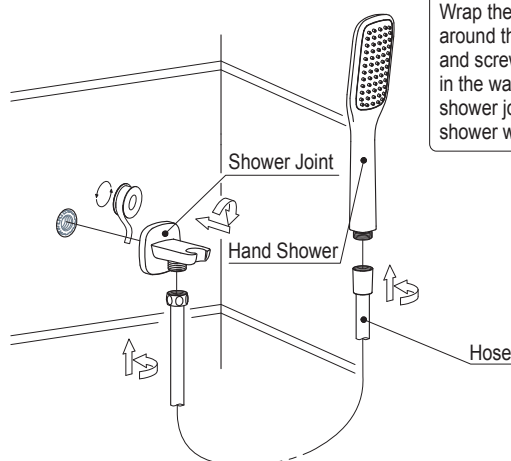
27

Turn the top handle to the right, water run from the rainshower.

Top Handle

24

Wrap the Teflon tape around the shower joint and screw to the connector in the wall. Connect the shower joint and hand shower with hose.

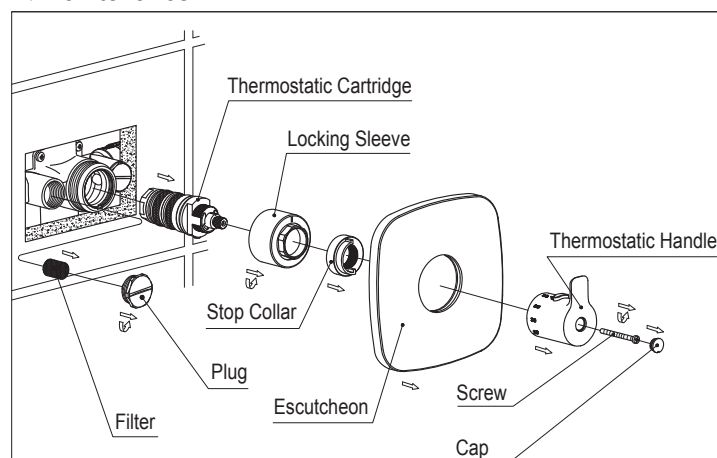


25

Finish the installation, run water for inspection. The figure for the state when top handle is turned to left and water run from hand shower.

Top Handle

## V. Maintenance



If the flow rate is less than normal or temperature control is imprecise after a period of usage. It is often due to poor water which blocks the filter nets on both sides of valve body and the filter net on the thermostatic cartridge. The cleaning method: At first, turn off the main valve. Then according to the diagram, unscrew two caps on the both sides of valve body. Take out small filter net and clean it with vinegar and brush. Rinse it and reassemble all parts back. Then check the water flow and temperature control. If the flow rate is still small, clean the filter net of thermostatic cartridge. The correct method as specified in the diagram: remove the caps with a sharp pointed implement. Unscrew the screw, thermostatic handle, stop collar and locking sleeve. Finally, pull out the thermostatic cartridge and clean its filter net as mentioned above. Then reinstall all the parts back. Attention: keep the four parts at one line: the slot on the thermostatic cartridge, the slot mark on the locking sleeve, the stop collar and the mark of 38 °C. (The slot mark on the lock sleeve is kept upwards.)