

# INSTRUCTION MANUAL

BS81112020

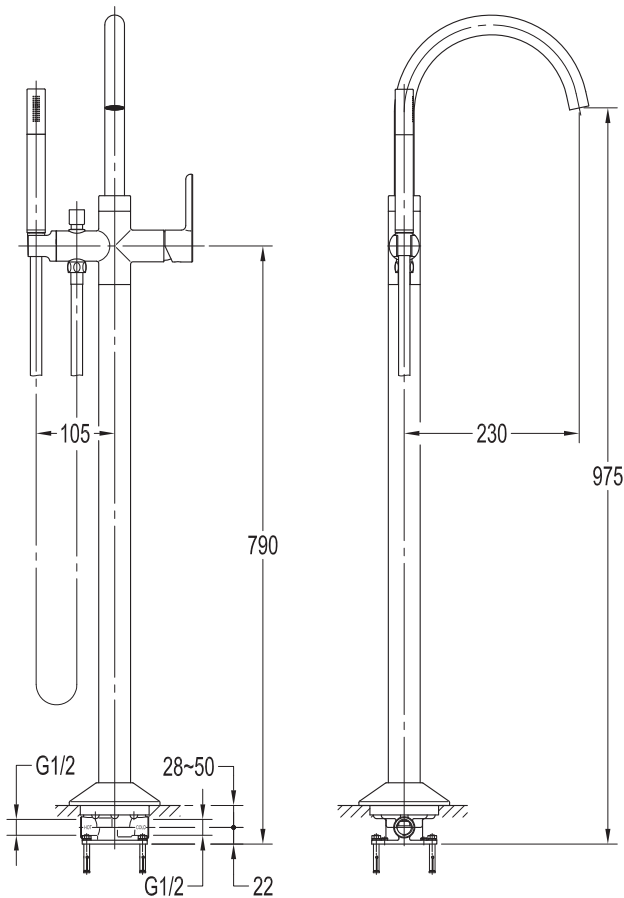
## I. Installation Notice

1. Install water pipes in accordance with this manual. Floor drain should be installed on the site.
2. The pedestal should be installed before the ground construction, and the matching faucet should be installed after the ground construction. Before installing the faucet, the rough-in box on the pedestal shall not be cut or removed, and shall be protected to avoid damage to the rough-in box and pedestal during construction.
3. Clean pipes to get rid of mud, sand or other debris blocked in pipes before installation.
4. If the thread does not match well with the water pipe, please find out the reason first; otherwise a forced connection will damage the faucet.
5. After installation, check all the joints to ensure they are firmly connected. Turn on and off the water repeatedly to ensure there is no leakage around the joints. After that, the product is ready for normal use. Hand the manual to users.

## II. Operation Notice

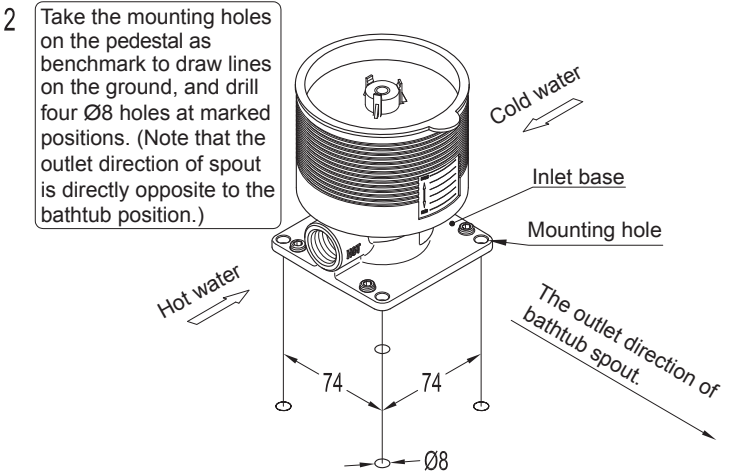
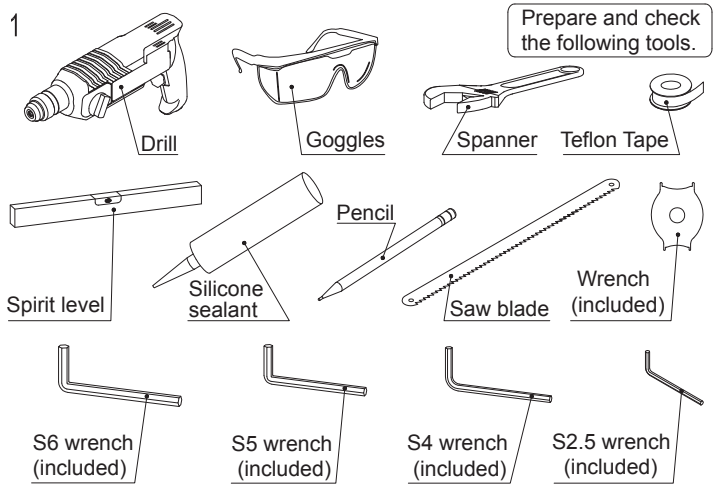
1. The product is used under water pressure 0.05~1.0 MPa, water temperature 4~90°C.
2. To avoid using the faucet as hand rail, a separate hand rail must be installed. Also, do not hang heavy objects on the faucet.
3. Make sure the faucet is off when no water comes out of it, especially when nobody resides in or during the period of decoration or suspension of water supply.
4. Regularly clean the surface of faucet to keep it bright. Attention: Do not use inappropriate tools such as sharp brushes, rough sponges, scouring pads or corrosive detergent to clean the faucet. It is not recommended to use the detergent sold in the market, because its formula changes frequently. Please clean the faucet with wet cloth and soapy water after usage. Then rinse off the soap with clean water and dry with a soft cotton cloth.
5. Residues of shampoo, shower gel, hair dye, perfume, shaving water, nail polish, toothpaste and other substances may cause damage to the product. Please carefully rinse residues with clean water after use. Also, do not store detergents and chemicals under the product, such place as vanity cabinet of washbasin; otherwise volatile gases will damage the product.
6. When room temperature drops below 0°C, take necessary measures (keep the product warm, close windows) to prevent the product from frost cracking (especially when windows kept open for air ventilation while nobody in the house).
7. Adjust the temperature before use to avoid scald.
8. Sensitive parts of the body, such as eyes, must be kept out of water flows from shower head.
9. Children, adults with mental disorders should not be allowed to use the shower system without supervision, nor should people affected by alcohol or drugs.
10. Do not disassemble the product without help from the professionals.

## III. Installation Diagram

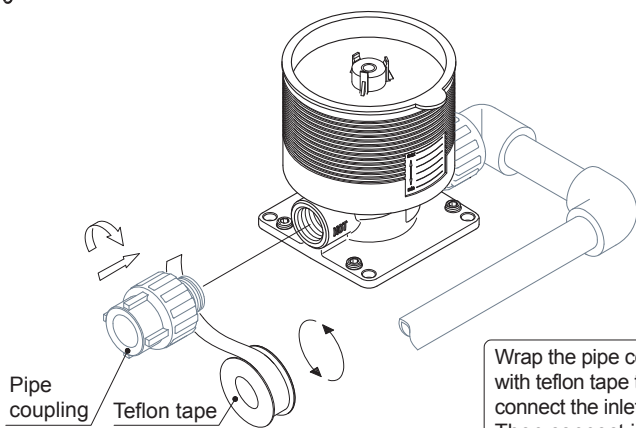


## IV. Installation Steps(Fig.1-20) \*

The installation diagram is only for reference. The product is subject to the real object.



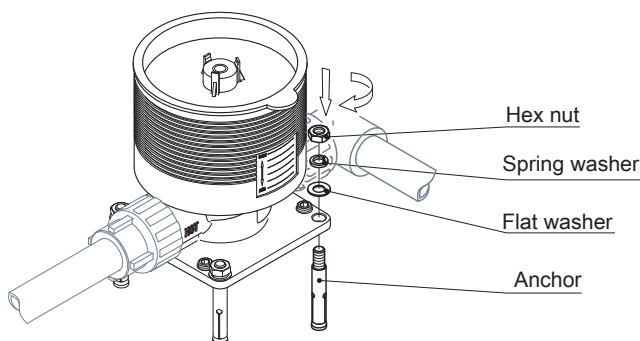
3



Pipe coupling  
Teflon tape

Wrap the pipe coupling with teflon tape to connect the inlet base. Then connect inlet pipes of proper length.

4

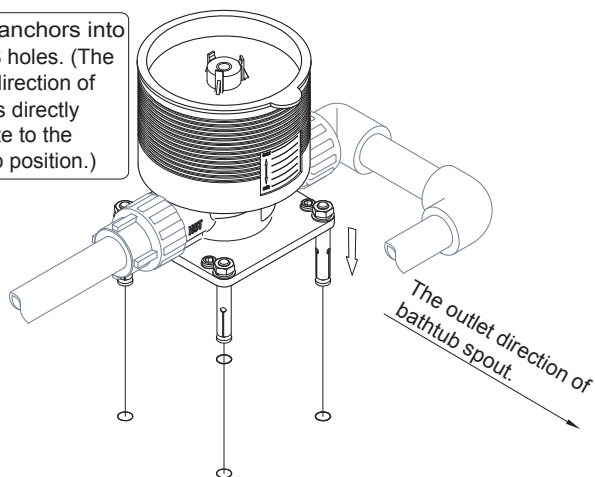


Hex nut  
Spring washer  
Flat washer  
Anchor

Install four anchors into the inlet base and slightly tighten the hex nuts.

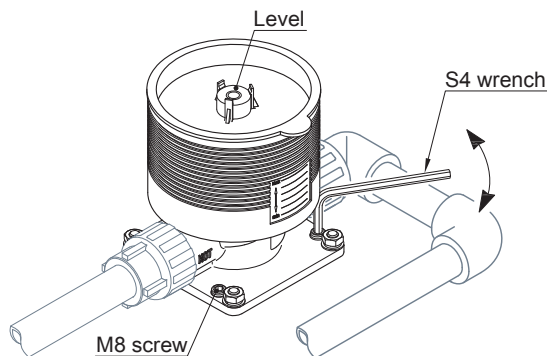
5

Insert anchors into the Ø8 holes. (The outlet direction of spout is directly opposite to the bathtub position.)

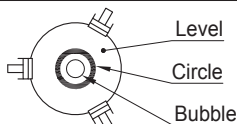


The outlet direction of bathtub spout.

6

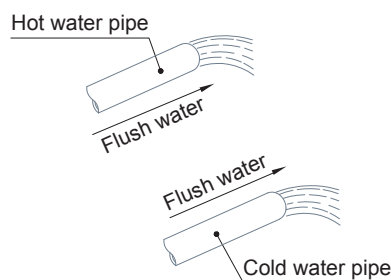


Adjust the M8 screws to make the inlet base horizontal, then tighten the hex nuts.



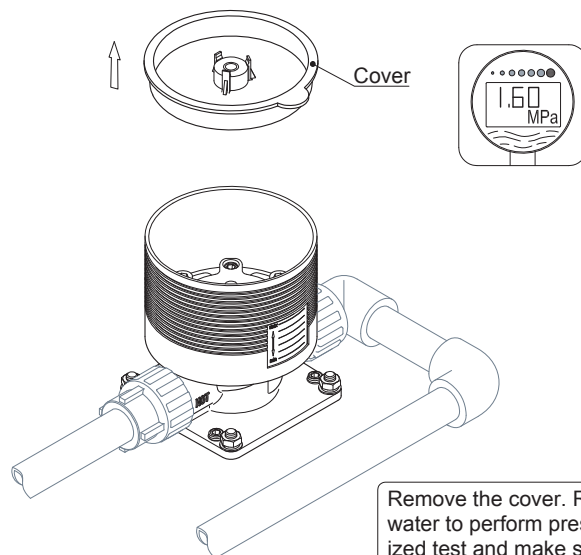
When the bubble inside the level is in the center of the circle, then the inlet base is level.

7



Flow water to remove the debris in pipes. Then connect feeding pipes. Please note that the end marked with "HOT" on the inlet base should be connected to hot water pipe, and the other end marked with "cold" should be connected to cold water pipe.

8

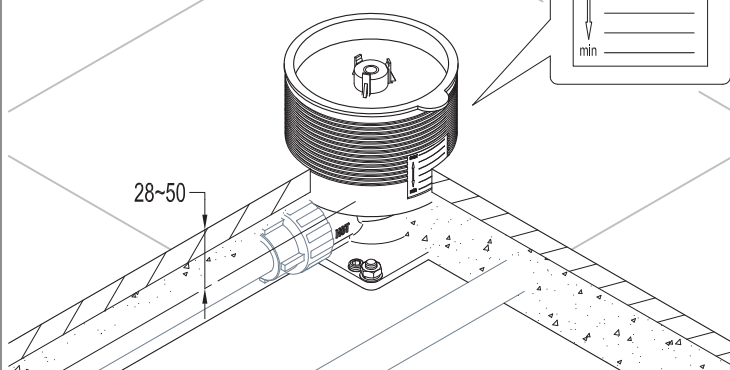
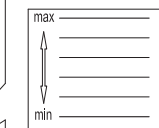


Remove the cover. Run water to perform pressurized test and make sure no leakage. Then put back the cover.

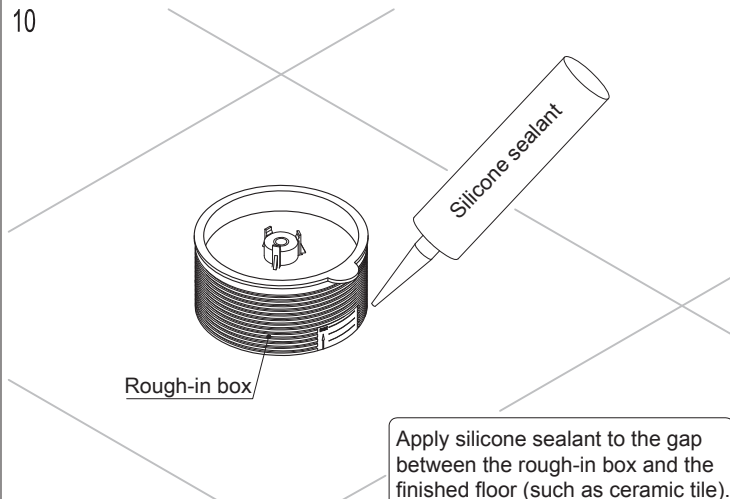
9

For ground construction, make sure the distance from pipe center to the finished floor is 28-50mm.

Reference lines for the finished floor



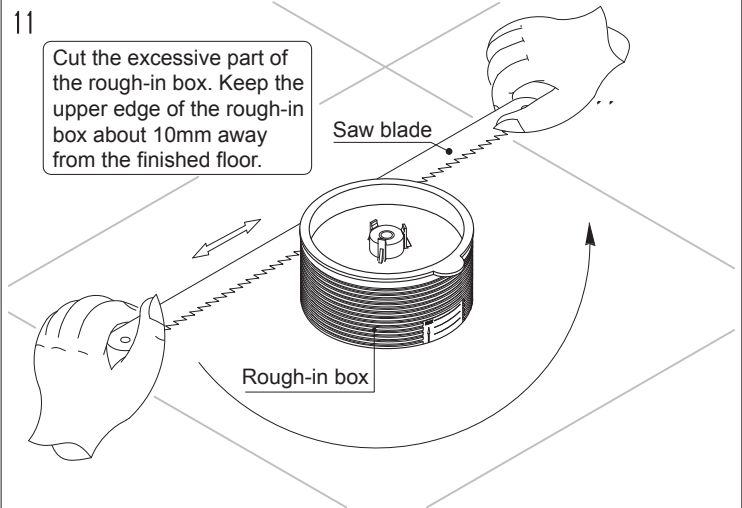
10



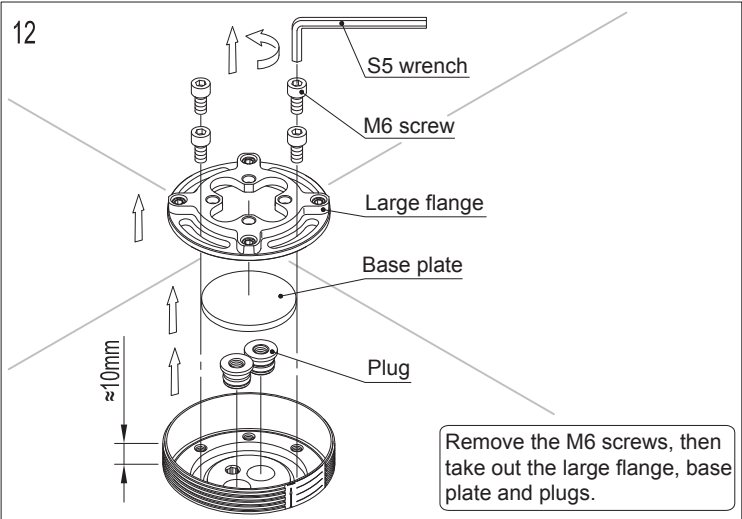
Apply silicone sealant to the gap between the rough-in box and the finished floor (such as ceramic tile).

11

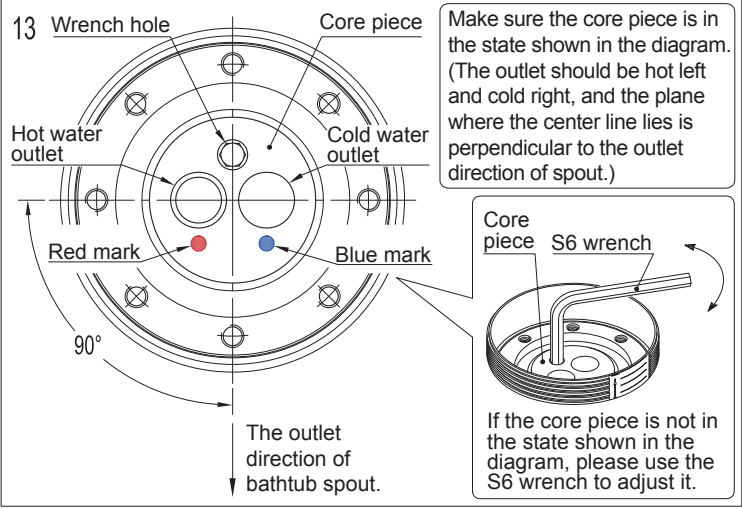
Cut the excessive part of the rough-in box. Keep the upper edge of the rough-in box about 10mm away from the finished floor.



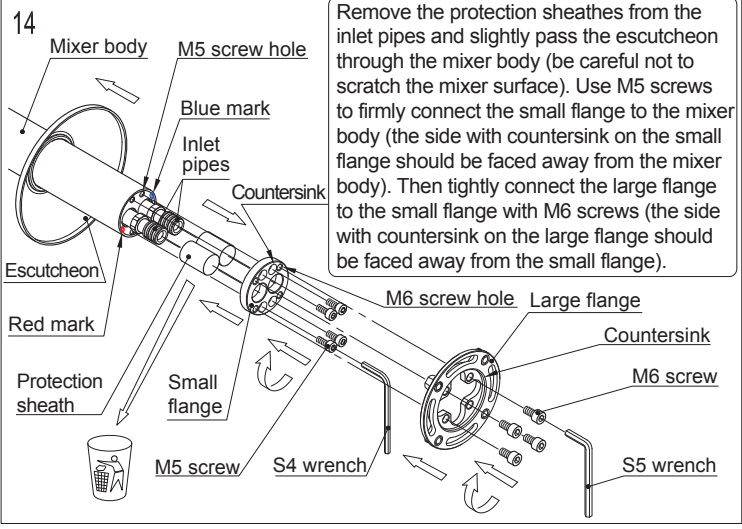
12



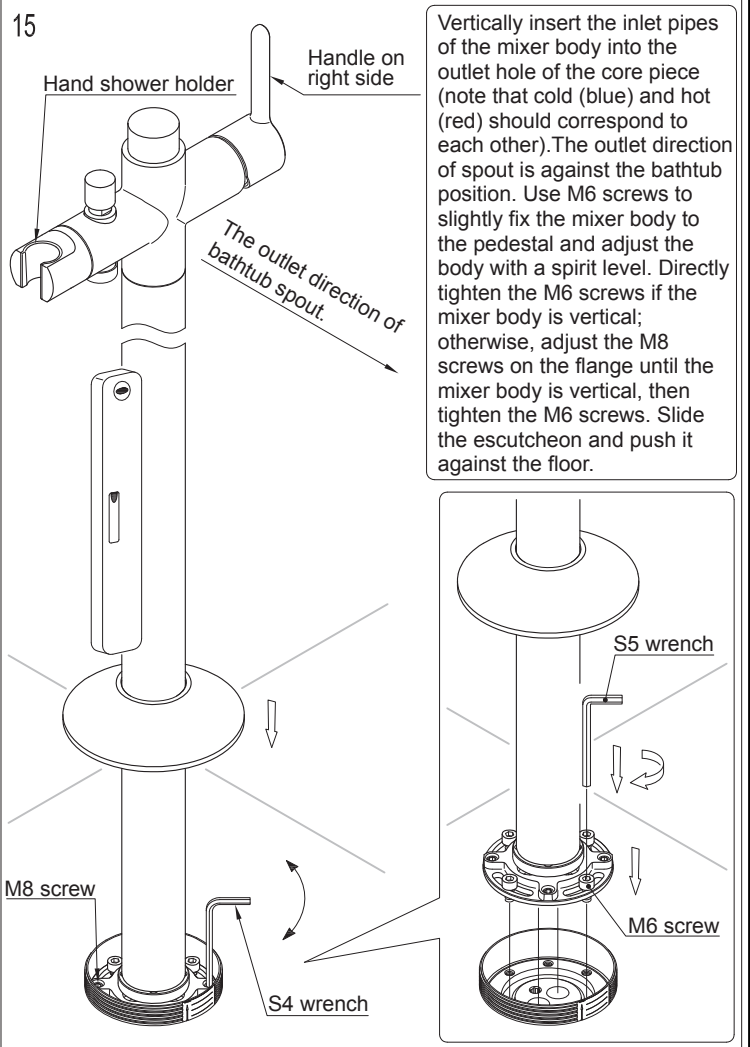
13



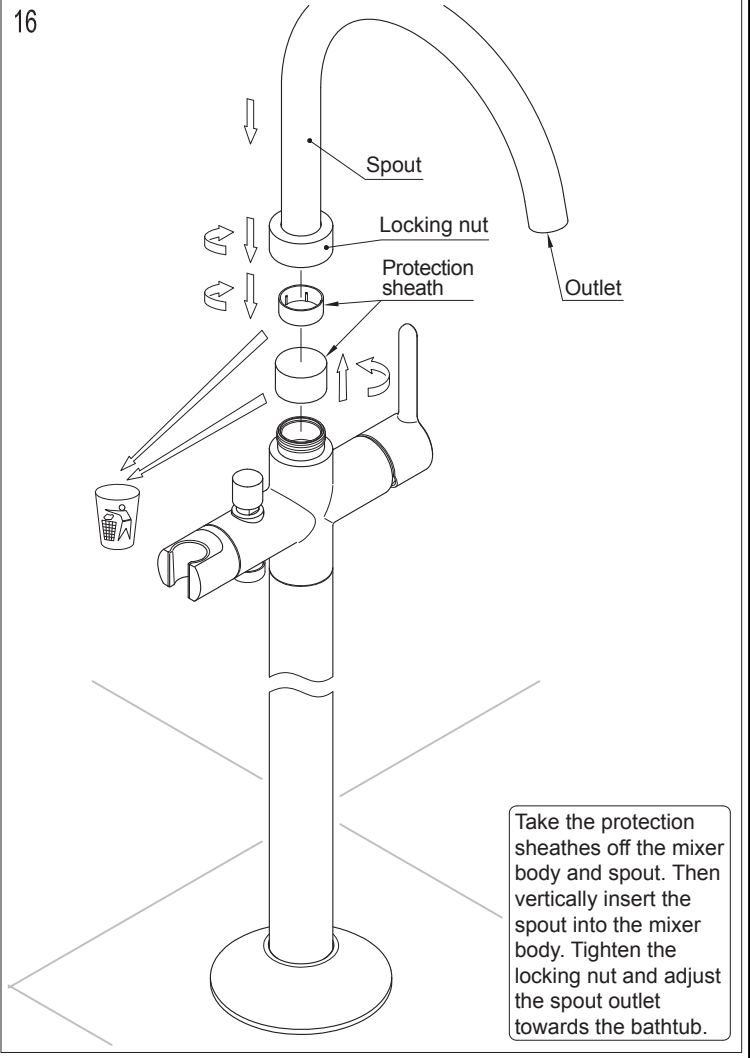
14



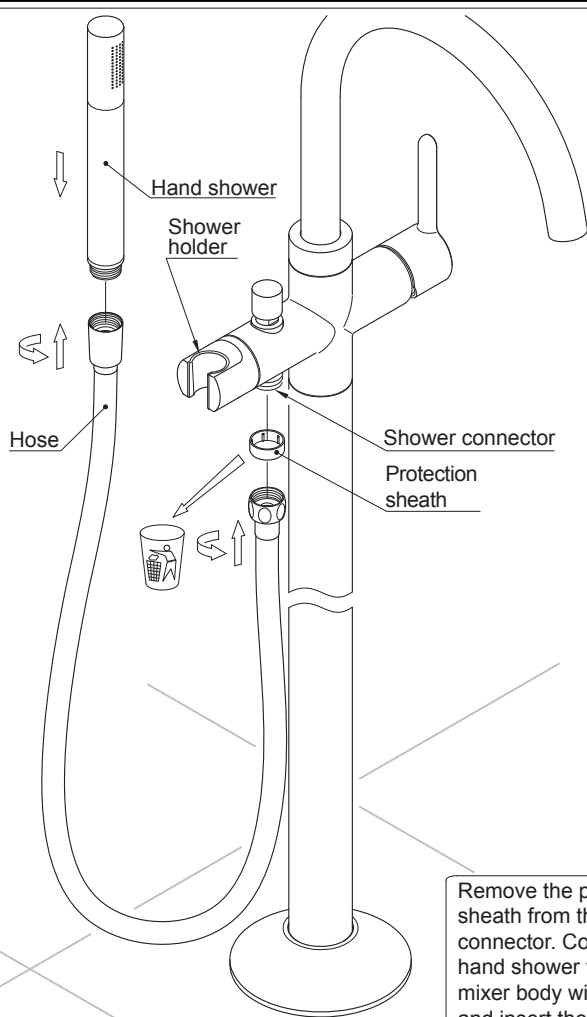
15



16

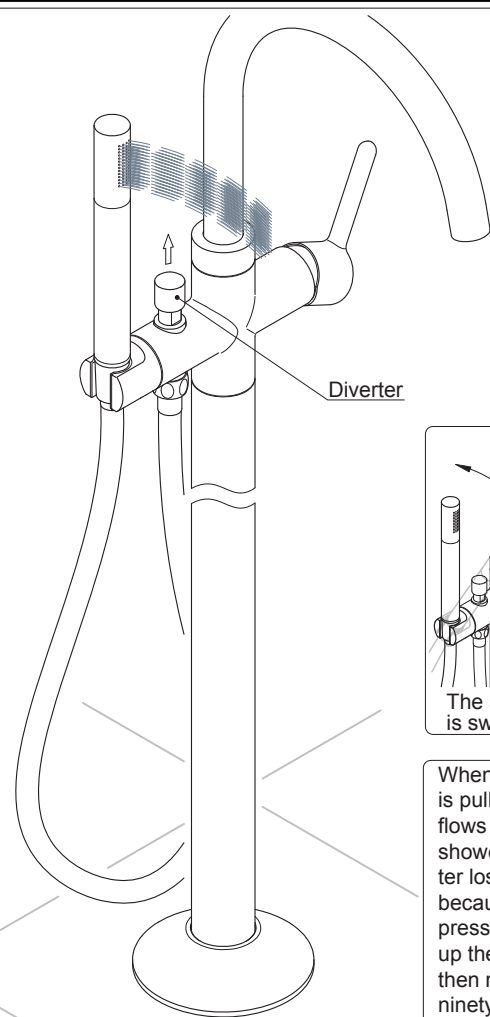


17



Remove the protection sheath from the shower connector. Connect hand shower to the mixer body with hose and insert the shower into its holder.

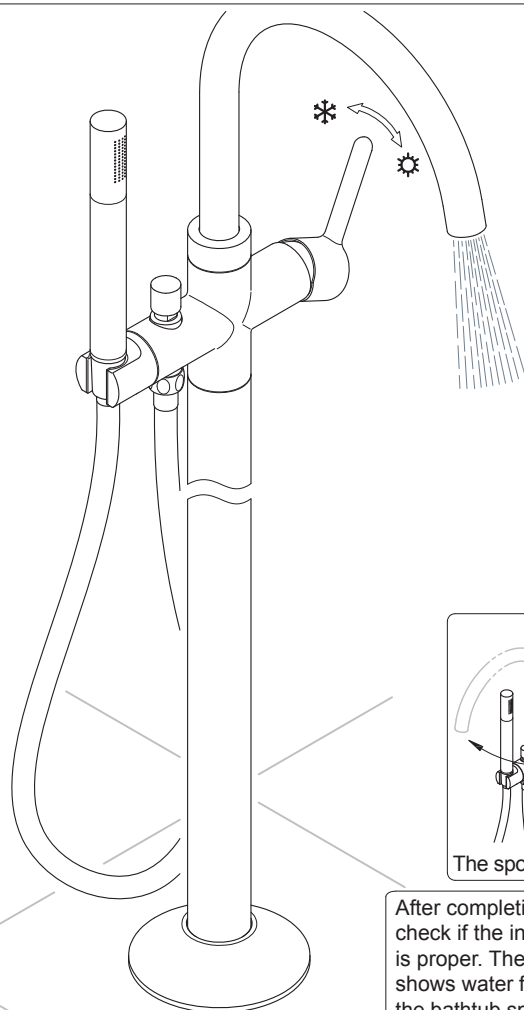
19



The shower holder is swivel.

When the diverter is pulled up, water flows from the hand shower. (if the diverter lose its function because of low water pressure, please pull up the diverter first, then rotate it by ninety degrees in any direction.)

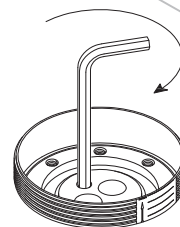
18



The spout is swivel.

After completion, double check if the installation is proper. The diagram shows water flows from the bathtub spout when the handle is turned on.

20

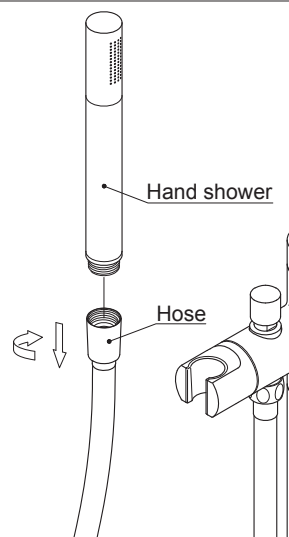


After installation, if it is found that the cold and hot water pipes are connected reversely, please use S6 wrench to rotate the core piece by 180° (the mixer body should be removed first).

## V. Maintenance(Fig.21~22):

If water flow from the hand shower does not spray evenly, or no water comes out of some outlets, it is possibly because dirt or debris blocks the nozzles. Please take off the hand shower as shown in Diagram 21 and clean the nozzles with a brush and vinegar. Then assemble it back after cleaning. If water flow from the hand shower is normal, but lessened when it comes out of the bathtub spout, it is possibly because dirt or debris blocks the aerator. Please remove the aerator as shown in Diagram 22 and put it back after cleaning.

21



22

