

INSTRUCTION MANUAL

BS01681341

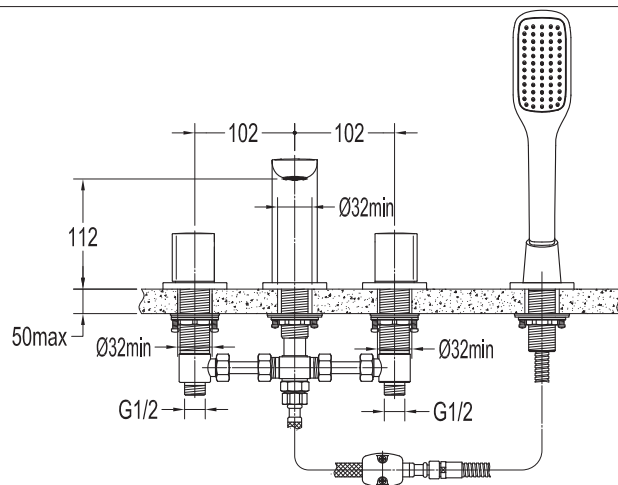
I. Installation Notice

1. Install water supply lines in accordance with this manual.
2. Floor drain should be installed in the location of the faucet.
3. Install the faucet only after the completion of house interior decoration in case paint or other chemicals erode the faucet surface.
4. Clean pipes to get rid of mud, sand or other debris blocked in pipes.
5. Check whether the threads can be matched. Otherwise, too strong force applied to the wrench will damage the faucet.
6. After installation, check all the joints to make sure they are firmly connected. Then keep water flow. Turn on and off repeatedly to ensure there is no leakage around the joints. At this stage, the product is ready for normal use.
7. Keep the manual to the user.

II. Operation Notice

1. The product is used between water pressure 0.05~1.0Mpa, water temperature 4~90°C.
2. Do not hang heavy things on the faucet.
3. Make sure the faucet is off when no water comes out of it (especially when nobody resides in or during the period of decoration or the absence of water).
4. Regularly clean the surface of the faucet in neutral wash solution. Then dry it with a piece of soft cotton cloth to keep it bright.
5. When the room temperature drops to below 0°C, take necessary measures (such as keeping faucet warm and closing windows) to prevent the faucet from being frozen or even broken (especially when windows kept open for air ventilation while nobody resides in).
6. Please open the cold and hot water in turn and adjust to suitable temperature before washing to avoid scald.
7. Do not disassemble the product unless you are an expert.

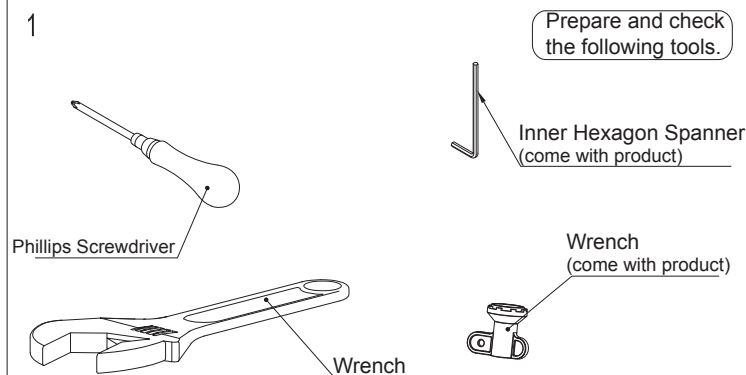
III. Installation Diagram



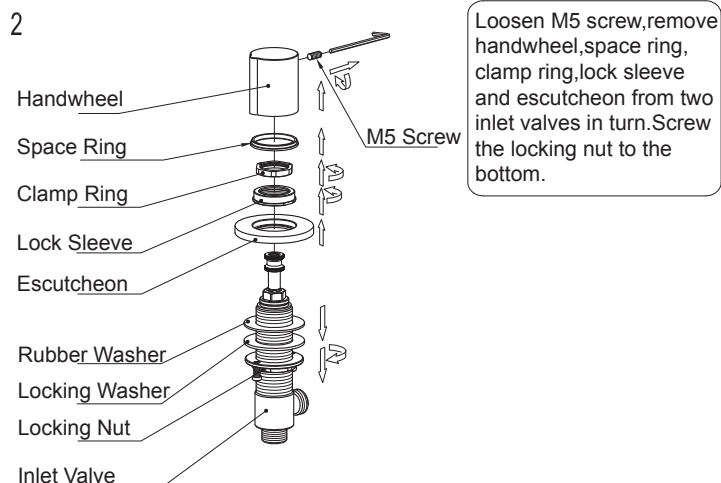
* The installation diagram is only for reference, the product is subject to the real object.

IV. Installation Step (Fig.1-10)

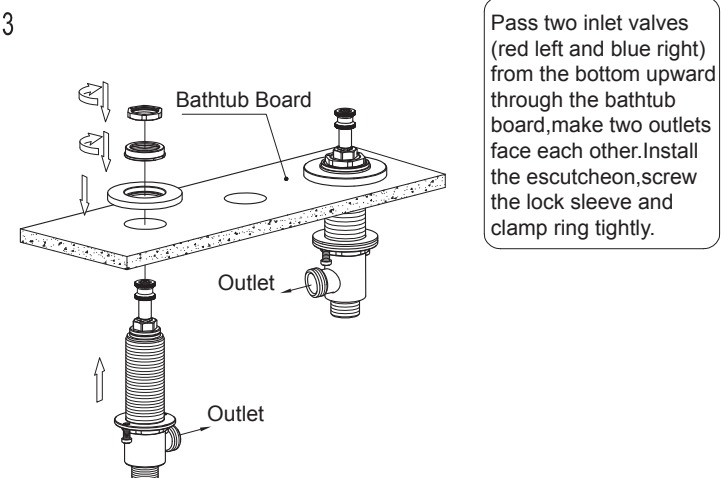
1



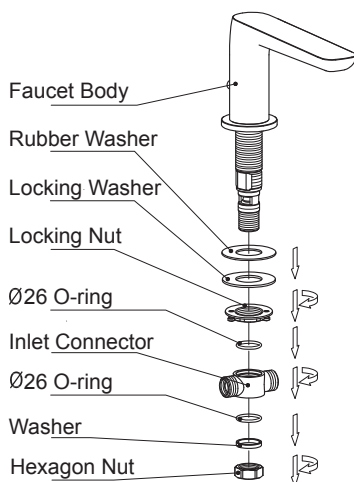
2



3

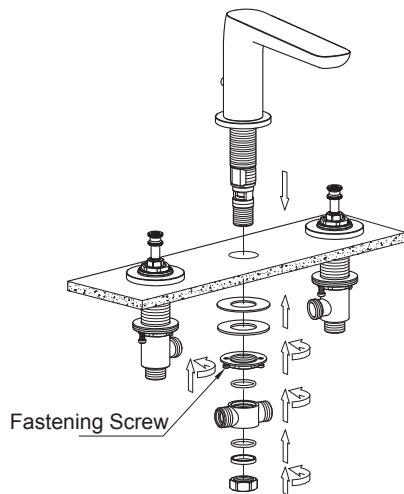


4



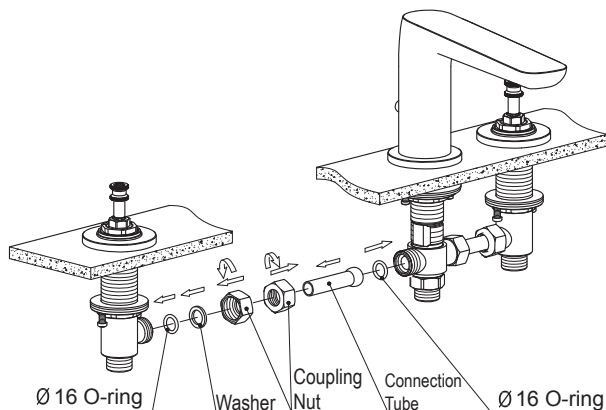
Remove hexagon nut, washer, Ø 26 O-ring, inlet connector, locking nut, locking washer and rubber washer from the faucet body.

5



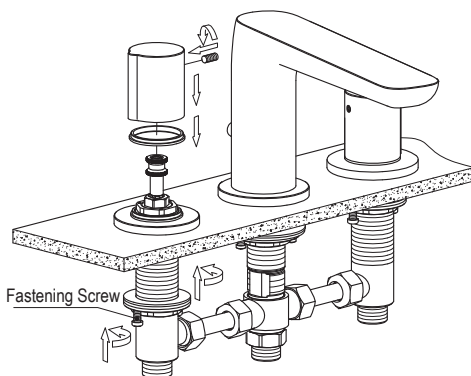
Pass the faucet body from the top downward through the bathtub board, install rubber washer and locking washer, screw the locking nut and tighten by fastening screw, then reinstall the removed parts in turn.

6



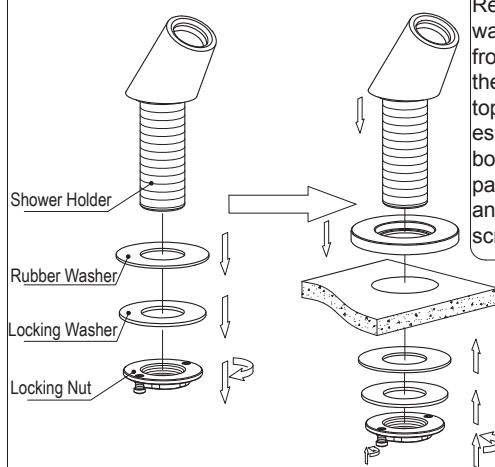
Connect two inlet valves and faucet body by two connection tubes, tighten the coupling nuts.

7



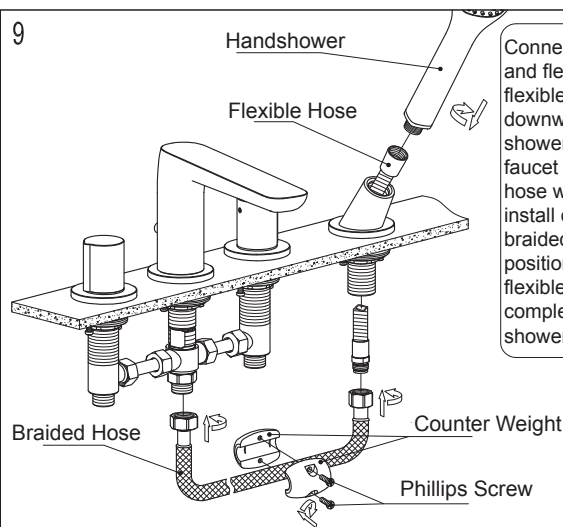
Screw and tighten locking nut and fastening screw of inlet valves in turn, install space ring and handwheel (Note: red left and blue right), then tighten by M5 screw.

8



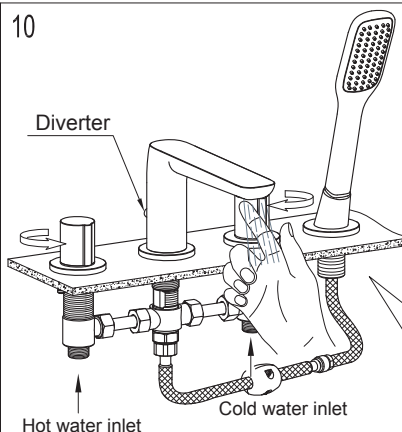
Remove locking nut, locking washer and rubber washer from shower holder. Pass the shower holder from the top downward through the escutcheon and bathtub board, reinstall the moved parts, tighten locking nut and fix it with fastening screw.

9

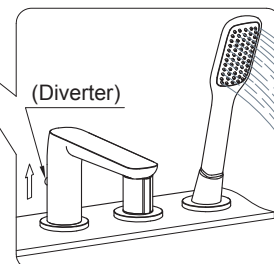


Connect handshower and flexible hose, pass flexible hose from the top downward through shower holder. Connect faucet body and flexible hose with braided hose, install counter weight to braided hose in proper position (make sure flexible hose can be completely pull out from shower holder).

10



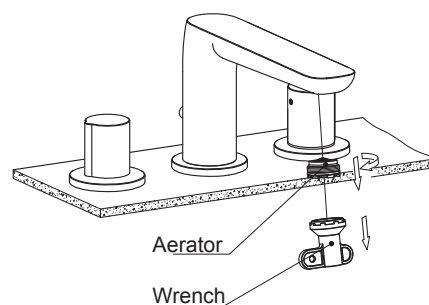
After installation, run water to check if the installation is qualified. Default water runs from bathtub (Direction of water outlet is multidirectional, maximum range is $\pm 8^\circ$). Lift the diverter, water runs from handshower.



V. Cleaning:

After a period of usage, debris blocked the aerator may cause lessened flowing volume, take the following steps to clean:

1



Unscrew the aerator by wrench to clean the filter of aerator, then install them back.