

INSTRUCTION
MANUAL

I. Installation Notice

- 1.Please lay water pipes in accordance with this manual.
- 2.Foor drain should be installed in the location of the faucet.
- 3.The product should be installed only after the completion of house interior decoration in case paint or other chemicals erode the mixer surface.
- 4.Clean pipes to get rid of mud, sand or other debris in pipes before installation.
- 5.Check whether the threads can be matched. Otherwise, install forcefull will damage the components.
- 6.After installation, check all the joints to make sure they are firmly connected. Then keep water flow to ensure no leaking problem. After that, the product is ready for normal use.
- 7.Keep the manual to users.

II. Operation Notice

- 1.The product is used under water pressure 0.05-1.0MPa, water temperature 4-90°C.
- 2.Do not hang heavy things on the product.
- 3.Clean the surface of the product regularly to keep it glossy. Note: Please do not use inappropriate tools such as sharp brushes, rough sponges, scouring pads or corrosive detergent. And it is not recommended to use the detergent sold in the market, because its formula changes frequently. Please clean the mixer with wet cloth and soapy water after some time of usage. Then rinse the soap off with clean water and dry with a soft cotton cloth.
- 4. Adjust the temperature before in use to avoid injury.
- 5.Do not disassemble the product without help from the professionals.

INSTRUCTION
MANUAL

I. Installation Notice

- 1.Please lay water pipes in accordance with this manual.
- 2.Foor drain should be installed in the location of the faucet.
- 3.The product should be installed only after the completion of house interior decoration in case paint or other chemicals erode the mixer surface.
- 4.Clean pipes to get rid of mud, sand or other debris in pipes before installation.
- 5.Check whether the threads can be matched. Otherwise, install forcefull will damage the components.
- 6.After installation, check all the joints to make sure they are firmly connected. Then keep water flow to ensure no leaking problem. After that, the product is ready for normal use.
- 7.Keep the manual to users.

II. Operation Notice

- 1.The product is used under water pressure 0.05-1.0MPa, water temperature 4-90°C.
- 2.Do not hang heavy things on the product.
- 3.Clean the surface of the product regularly to keep it glossy. Note: Please do not use inappropriate tools such as sharp brushes, rough sponges, scouring pads or corrosive detergent. And it is not recommended to use the detergent sold in the market, because its formula changes frequently. Please clean the mixer with wet cloth and soapy water after some time of usage. Then rinse the soap off with clean water and dry with a soft cotton cloth.
- 4. Adjust the temperature before in use to avoid injury.
- 5.Do not disassemble the product without help from the professionals.

INSTRUCTION
MANUAL

I. Installation Notice

- 1.Please lay water pipes in accordance with this manual.
- 2.Foor drain should be installed in the location of the faucet.
- 3.The product should be installed only after the completion of house interior decoration in case paint or other chemicals erode the mixer surface.
- 4.Clean pipes to get rid of mud, sand or other debris in pipes before installation.
- 5.Check whether the threads can be matched. Otherwise, install forcefull will damage the components.
- 6.After installation, check all the joints to make sure they are firmly connected. Then keep water flow to ensure no leaking problem. After that, the product is ready for normal use.
- 7.Keep the manual to users.

II. Operation Notice

- 1.The product is used under water pressure 0.05-1.0MPa, water temperature 4-90°C.
- 2.Do not hang heavy things on the product.
- 3.Clean the surface of the product regularly to keep it glossy. Note: Please do not use inappropriate tools such as sharp brushes, rough sponges, scouring pads or corrosive detergent. And it is not recommended to use the detergent sold in the market, because its formula changes frequently. Please clean the mixer with wet cloth and soapy water after some time of usage. Then rinse the soap off with clean water and dry with a soft cotton cloth.
- 4. Adjust the temperature before in use to avoid injury.
- 5.Do not disassemble the product without help from the professionals.

INSTRUCTION
MANUAL

I. Installation Notice

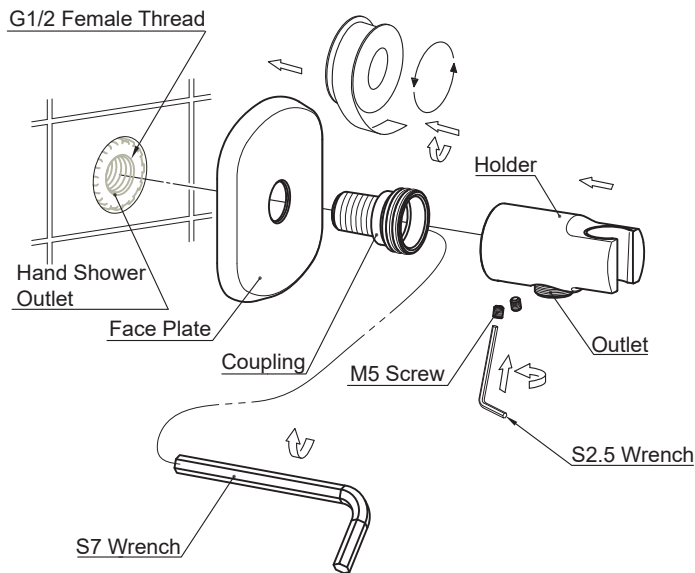
- 1.Please lay water pipes in accordance with this manual.
- 2.Foor drain should be installed in the location of the faucet.
- 3.The product should be installed only after the completion of house interior decoration in case paint or other chemicals erode the mixer surface.
- 4.Clean pipes to get rid of mud, sand or other debris in pipes before installation.
- 5.Check whether the threads can be matched. Otherwise, install forcefull will damage the components.
- 6.After installation, check all the joints to make sure they are firmly connected. Then keep water flow to ensure no leaking problem. After that, the product is ready for normal use.
- 7.Keep the manual to users.

II. Operation Notice

- 1.The product is used under water pressure 0.05-1.0MPa, water temperature 4-90°C.
- 2.Do not hang heavy things on the product.
- 3.Clean the surface of the product regularly to keep it glossy. Note: Please do not use inappropriate tools such as sharp brushes, rough sponges, scouring pads or corrosive detergent. And it is not recommended to use the detergent sold in the market, because its formula changes frequently. Please clean the mixer with wet cloth and soapy water after some time of usage. Then rinse the soap off with clean water and dry with a soft cotton cloth.
- 4. Adjust the temperature before in use to avoid injury.
- 5.Do not disassemble the product without help from the professionals.

■ Steps (Fig.1-4):

- 1.Install G1/2 female thread outlet pipe in appropriate height and position.
Note: The center line of female thread should be perpendicular to the wall.
- 2.Wrap coupling with teflon tape and connect them to the outlet pipe through face plate, and tighten the face plate against the wall.
- 3.Install the holder on the coupling, with outlet faces downwards. Then tighten the holder with M5 screws.
- 4.When finished, flow the water, and double check if the installation is correct.

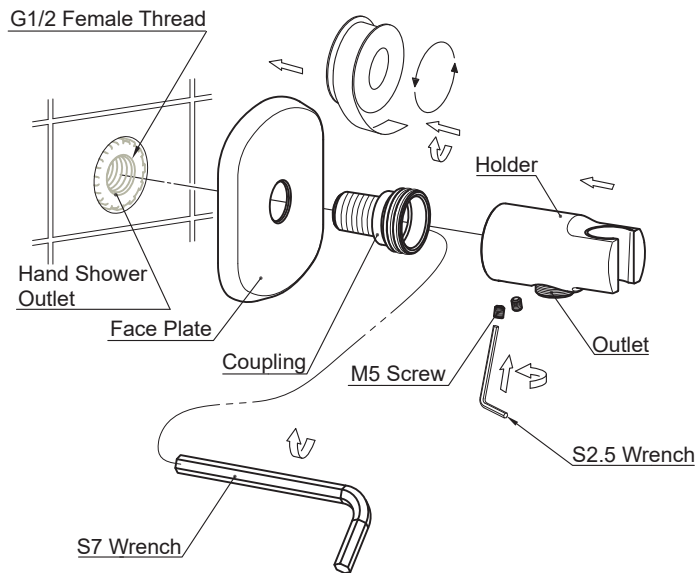


* The installation diagram is only for reference.
The product is subject to the real object.

BS08091728

■ Steps (Fig.1-4):

- 1.Install G1/2 female thread outlet pipe in appropriate height and position.
Note: The center line of female thread should be perpendicular to the wall.
- 2.Wrap coupling with teflon tape and connect them to the outlet pipe through face plate, and tighten the face plate against the wall.
- 3.Install the holder on the coupling, with outlet faces downwards. Then tighten the holder with M5 screws.
- 4.When finished, flow the water, and double check if the installation is correct.

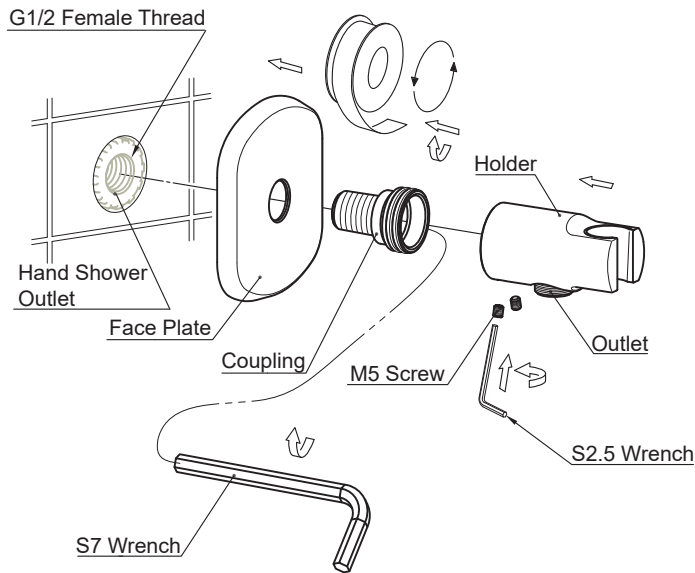


* The installation diagram is only for reference.
The product is subject to the real object.

BS08091728

■ Steps (Fig.1-4):

- 1.Install G1/2 female thread outlet pipe in appropriate height and position.
Note: The center line of female thread should be perpendicular to the wall.
- 2.Wrap coupling with teflon tape and connect them to the outlet pipe through face plate, and tighten the face plate against the wall.
- 3.Install the holder on the coupling, with outlet faces downwards. Then tighten the holder with M5 screws.
- 4.When finished, flow the water, and double check if the installation is correct.

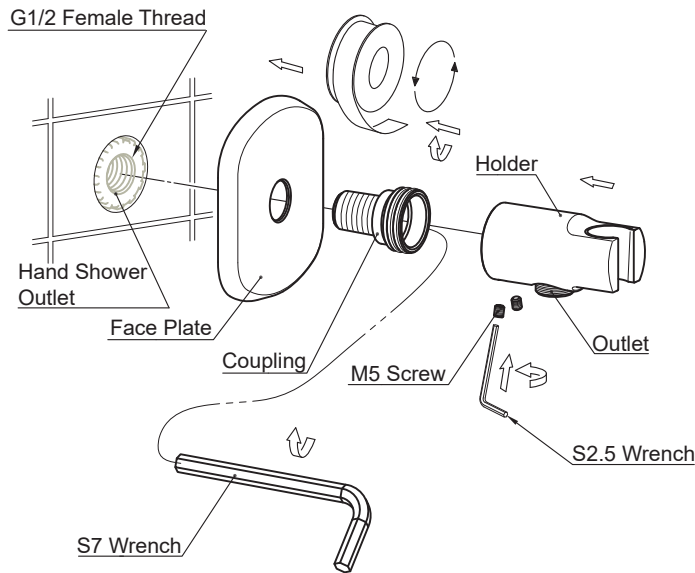


* The installation diagram is only for reference.
The product is subject to the real object.

BS08091728

■ Steps (Fig.1-4):

- 1.Install G1/2 female thread outlet pipe in appropriate height and position.
Note: The center line of female thread should be perpendicular to the wall.
- 2.Wrap coupling with teflon tape and connect them to the outlet pipe through face plate, and tighten the face plate against the wall.
- 3.Install the holder on the coupling, with outlet faces downwards. Then tighten the holder with M5 screws.
- 4.When finished, flow the water, and double check if the installation is correct.



* The installation diagram is only for reference.
The product is subject to the real object.

BS08091728