

# INSTRUCTION MANUAL

BS83211850

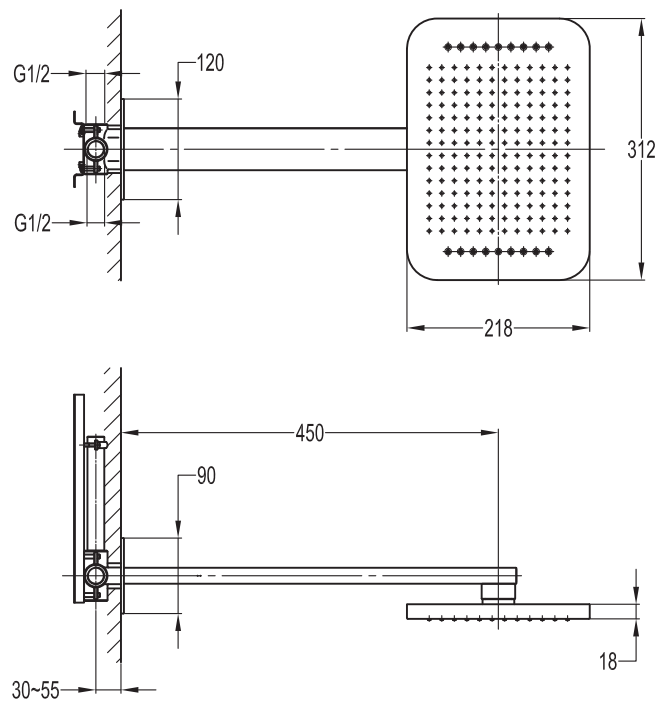
## I. Installation Notice

1. Install water supply lines in accordance with this manual.
2. Floor drain should be installed in the location of the faucet.
3. Except the shower housing, all the exposed parts of faucet must be installed only after the completion of house interior decoration in case paint or other chemicals erode the faucet surface. Before that the protection sheath on the shower housing can not be taken off.
4. Clean pipes before installation to get rid of mud, sand or other debris.
5. If the thread of pipes don't match well with product, please find out the reason first, otherwise a forced connection will damage the faucet.
6. After installation, check all the joints to make sure they are firmly connected. Then keep water flow. Turn on and off repeatedly to ensure there is no leakage around the joints, after which, the product is ready for normal use.
7. Keep the manual to the user.

## II. Operation Notice

1. The product is used under water pressure 0.1~0.5MPa, water temperature 4~70°C.
2. Do not hang heavy things on the product.
3. Remember to turn off the mixer when no water comes out of it, especially when nobody in the house or during the decoration period or power off.
4. Clean the surface of the product regularly to keep it bright.  
Note: Please do not use inappropriate tools such as sharp brushes, rough sponges, scouring pads or corrosive detergent. And it is not recommend to use the detergent sold in the market, because its formula changes frequently. Please clean the product with wet cloth and soapy water after some time of usage. Then rinse the soap out with clean water and dry with a soft cotton cloth.
5. Please open the cold and hot water in turn and adjust to comfortable temperature before washing to avoid scald.
6. Do not disassemble the product with help from the professionals.

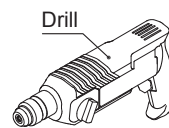
## III. Installation Diagram



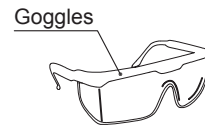
## IV. Installation Steps (Fig.1-18) \* The installation diagram is only for reference. The product is subject to the real object.

1

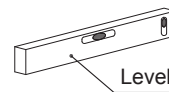
Prepare and check the following tools.



Drill



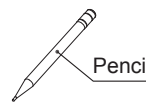
Goggles



Level



Philips Screwdriver



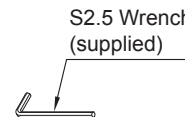
Pencil



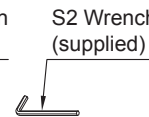
Teflon Tape



S7 Wrench (supplied)

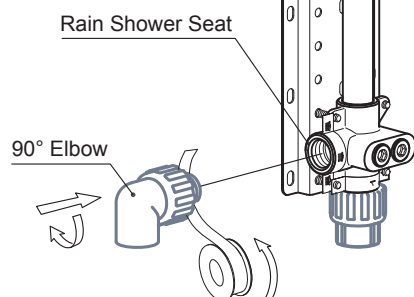


S2.5 Wrench (supplied)



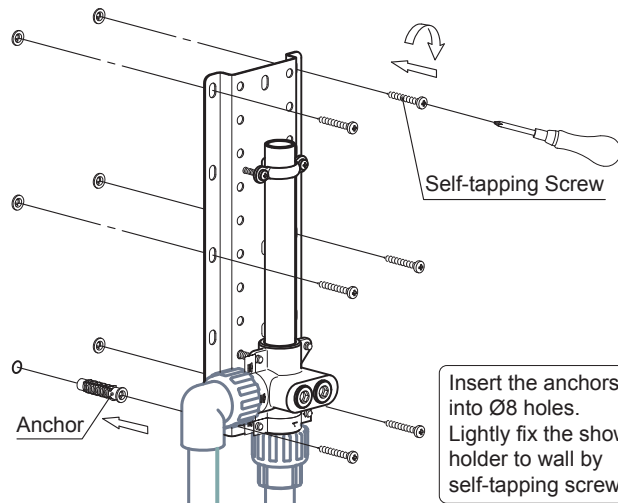
S2 Wrench (supplied)

2



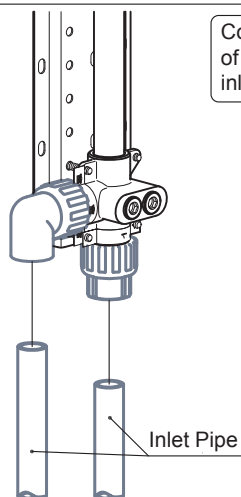
Wrap the teflon tape around the 90° elbow. Then screw it into the rough-in. Attention: keep two open ends of pipes face downwards.

6



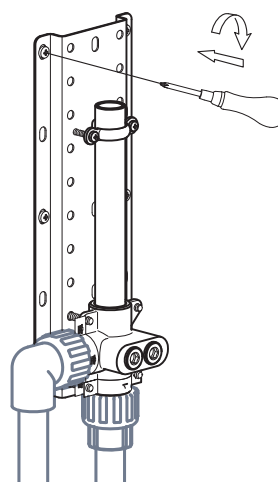
Insert the anchors into Ø8 holes. Lightly fix the shower holder to wall by self-tapping screws.

3



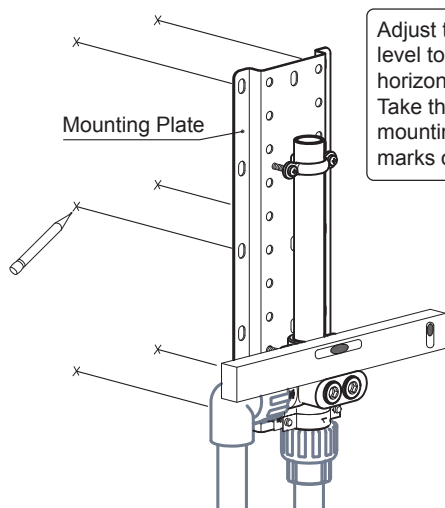
Connect the inlet pipes of proper length to the inlet connector.

7



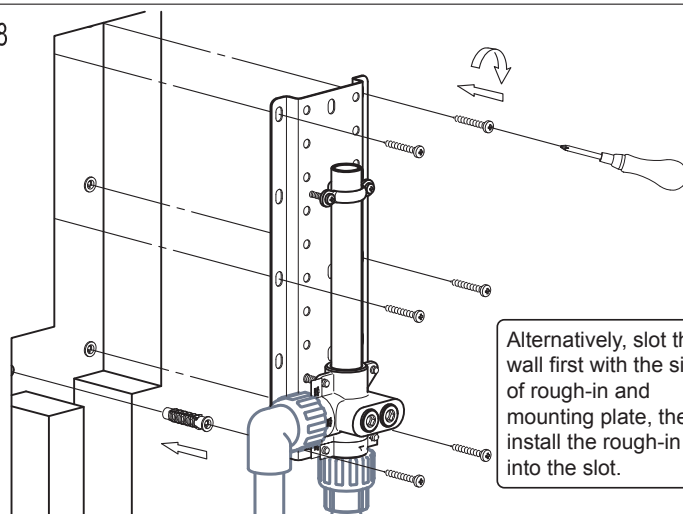
Adjust the shower seat with level, then tighten self-tapping screws.

4



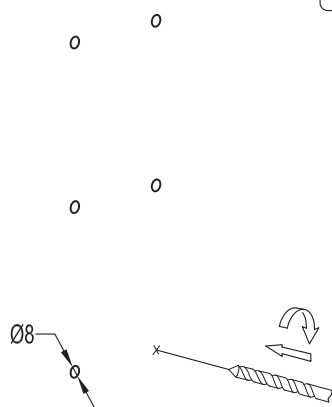
Adjust the rough-in with level to keep it in a horizontal position. Take the holes on the mounting plate to make marks on the wall.

8



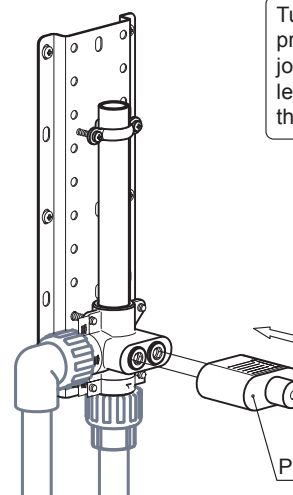
Alternatively, slot the wall first with the size of rough-in and mounting plate, then install the rough-in into the slot.

5

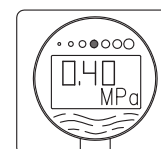


Drill six Ø8 holes at marked positions.

9

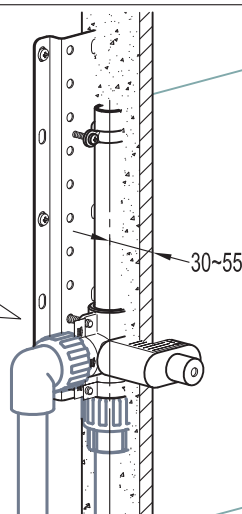


Turn on water to test pressure, check each joint, ensure there is no leakage. Then put on the protective sheath.



10

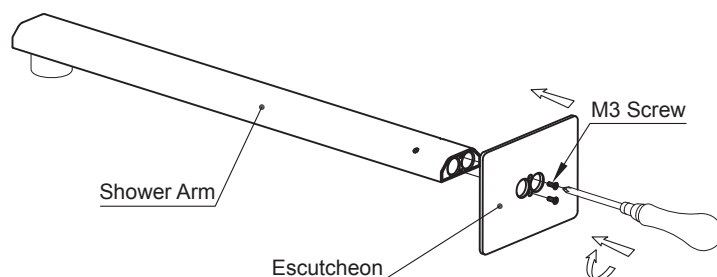
Reference line of  
finished wall



Install the ceramic  
tiles on the wall,  
pay attention to the  
installation depth.

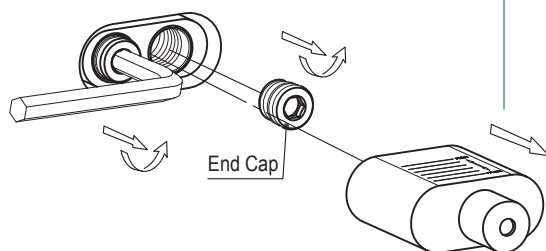
14

Install the escutcheon to the shower arm.



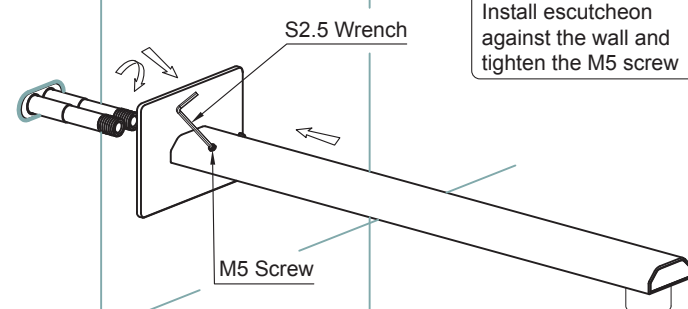
11

Take off the protective  
sheath and plug.



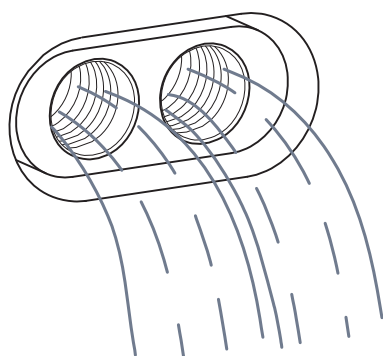
15

Loosen the M5 screw  
with S2.5 wrench.  
Install the shower arm  
to the connecting pipe.  
Install escutcheon  
against the wall and  
tighten the M5 screw



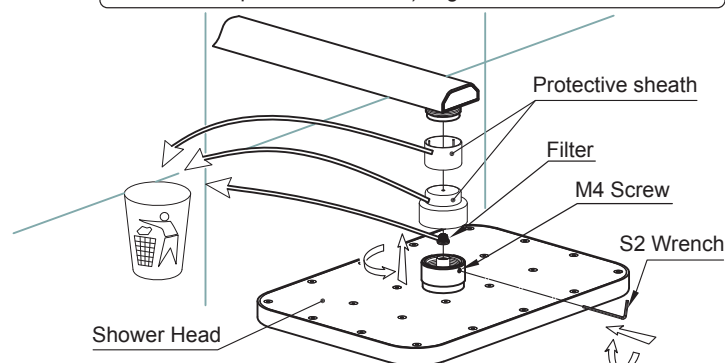
12

Flow water to clean  
the pipes.



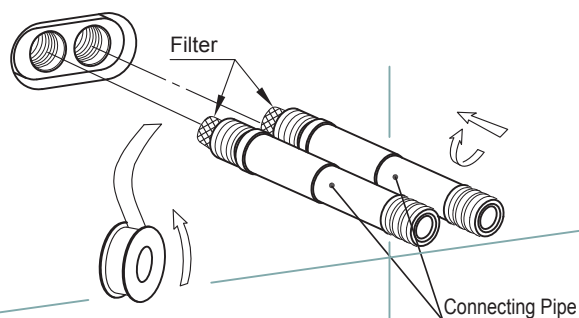
16

Take off the protective sheath from the shower arm and shower head. Remove the filter from shower head. Connect the shower head and shower arm. (Note: screw it to the end first, then unscrew for no more than half-turn. Keep the edge of the shower head parallel to the wall). Tighten it with M4 screw.



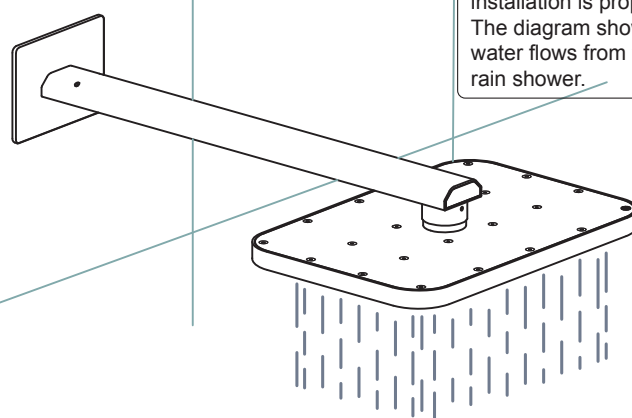
13

Wrap the teflon tape around two  
connecting pipes and screw it into  
the rough-in. Do not lose the filter  
on the connecting pipes. Tighten  
all pipes when finished.

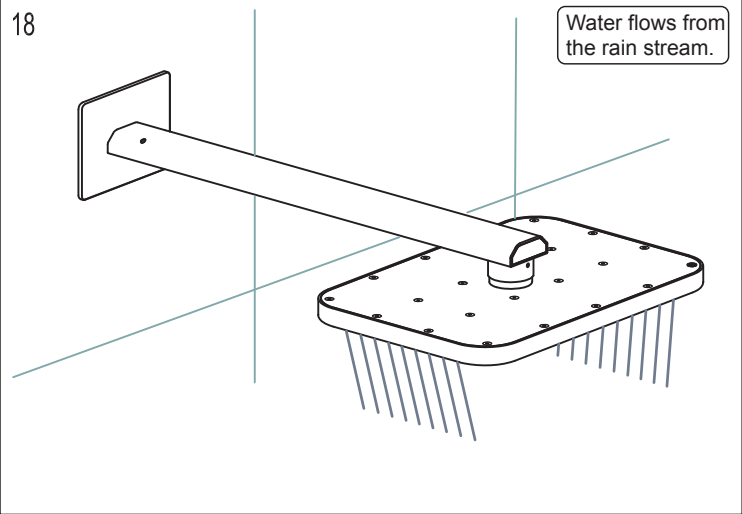


17

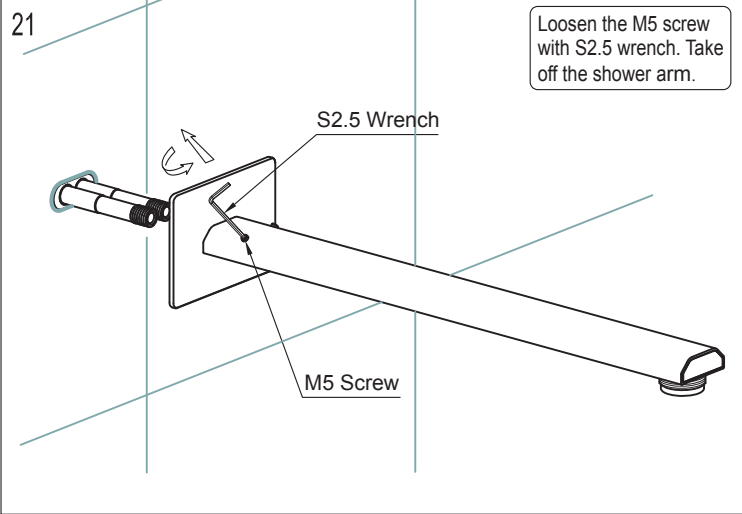
When completed, run  
water to check if the  
installation is proper.  
The diagram shows  
water flows from the  
rain shower.



18



21

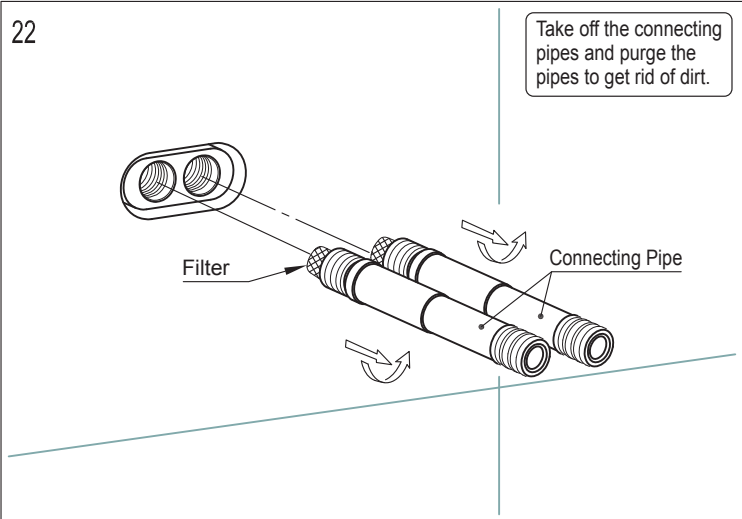


## V. Maintenance (Diagram 19~24)

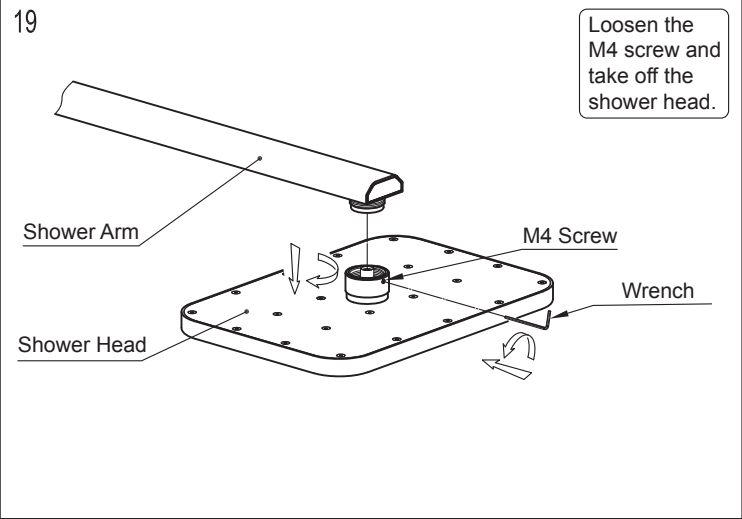
If flow rate is lessened after a period of usage, it is possibly because debris blocks the filters due to poor water quality. Cleaning method should be taken as followed. First, turn off the main valve. Take off the shower head as shown in the diagram 19 and 20. and clean the small holes. Remove the connecting pipes as shown in the diagram 21 and 22. Use brush and vinegar to remove dirt and debris from small filters and holes, and rinse with clean water. Then use flush water to get rid of dirt and debris in pipes (Diagram 16), and install the rainshower back like Diagram 13, 15 and 16.

If water flow from the rainshower becomes lessened or does not spray evenly, it might be due to debris blocking the outlet. Gently squeeze those rubber outlets on the rain shower with fingers as shown in Diagram 24. Then purge the debris with running water.

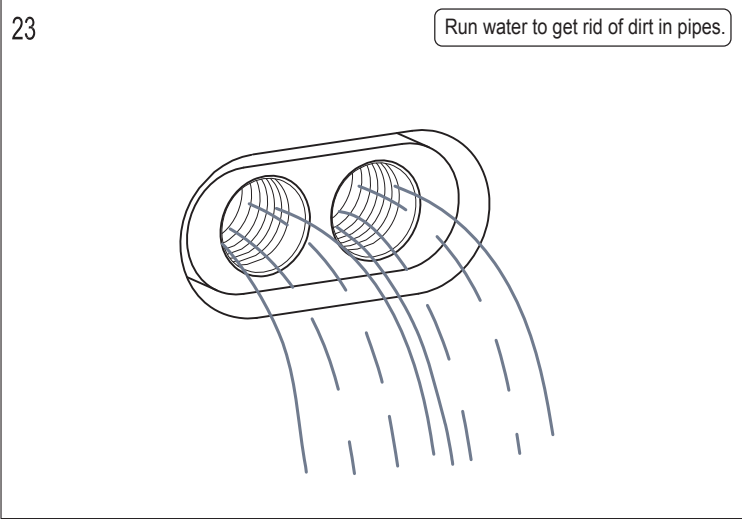
22



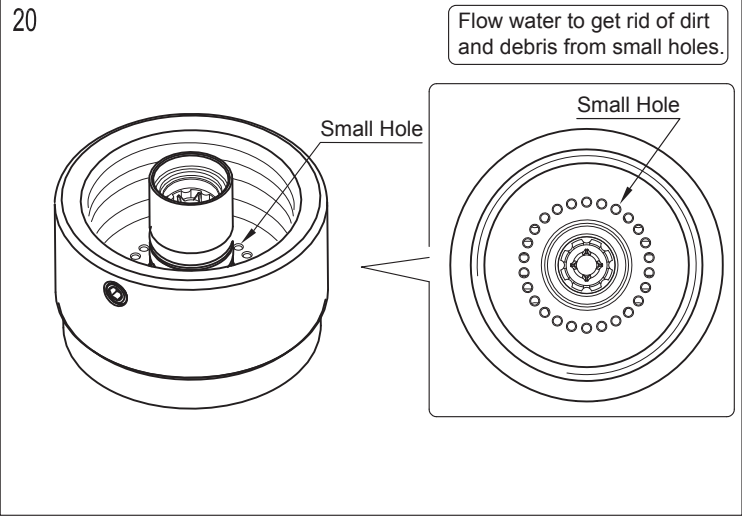
19



23



20



24

