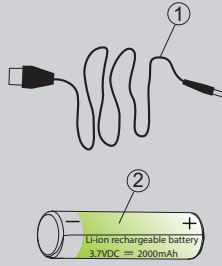
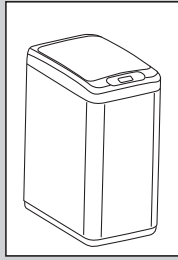
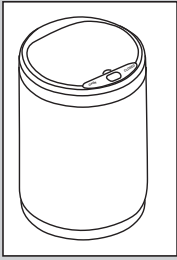
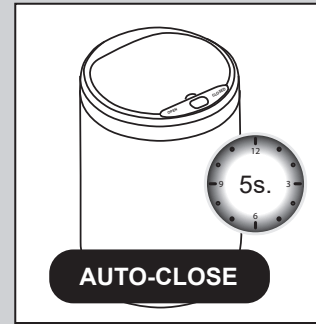
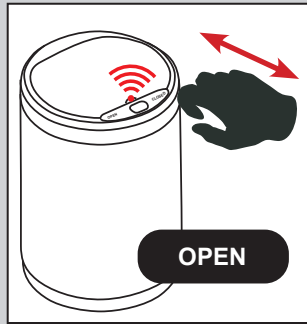


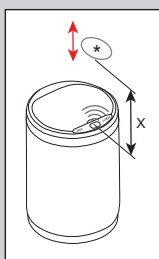
PAPELERAS SENSOR _ DUSTBIN SENSOR POUBELLE AVEC CAPTEUR - LIXO COM SENSOR



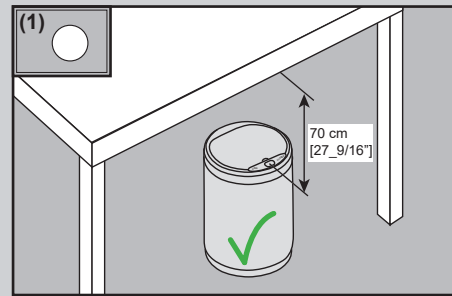
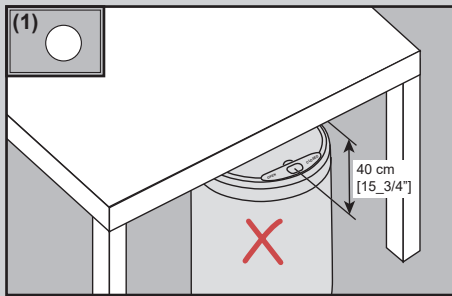
1	100301722
2	100301706

A

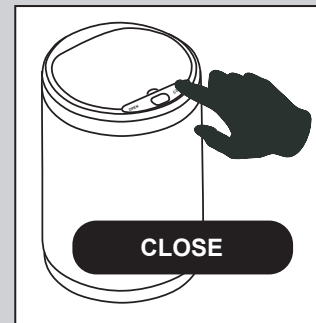
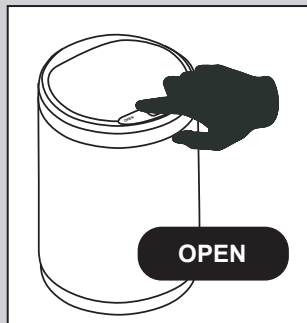




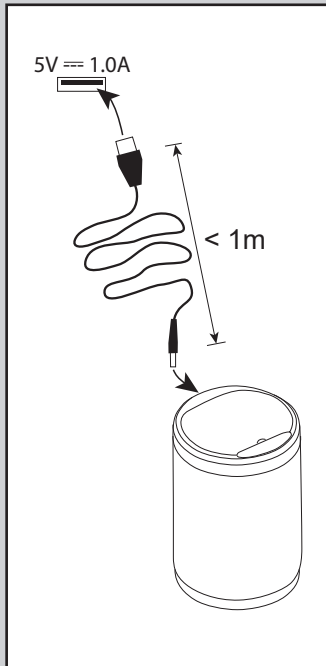
			(1)		
X	0-35 cm [0-13_3/4"]	0-25 cm [0-9_13/16"]	0-65 cm [0-25_9/16"]	0-105 cm [0-41_5/16"]	0-165 cm [0-64_15/16"]



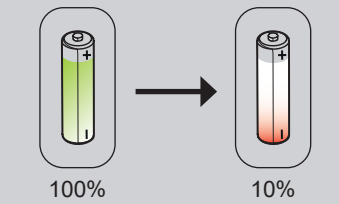
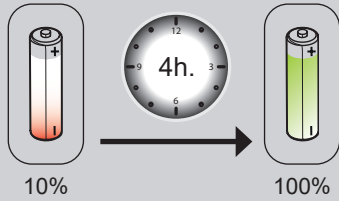
B



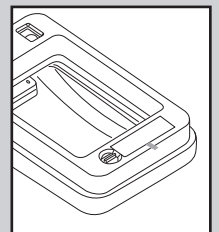
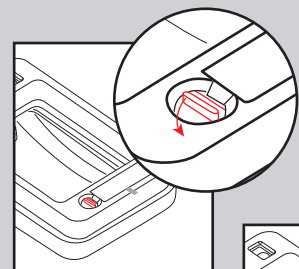
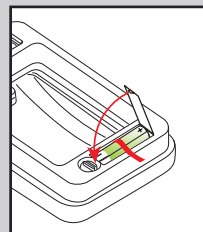
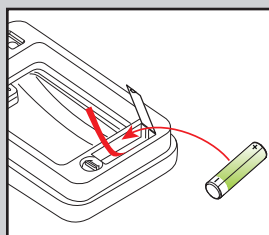
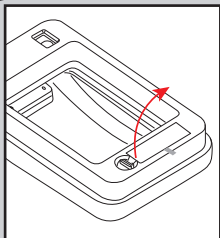
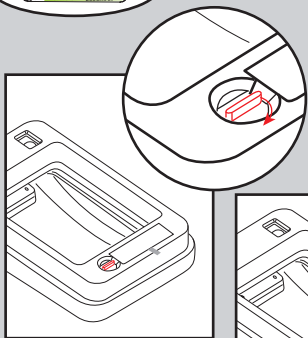
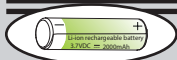
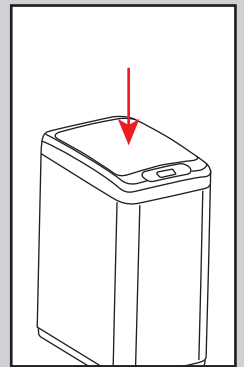
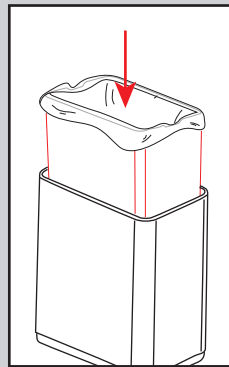
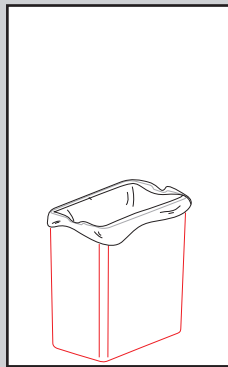
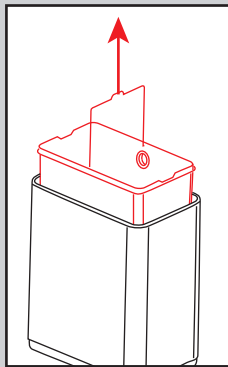
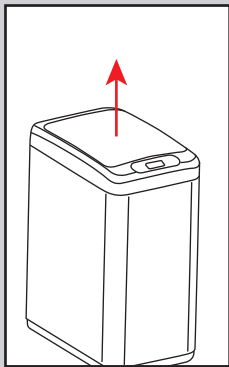
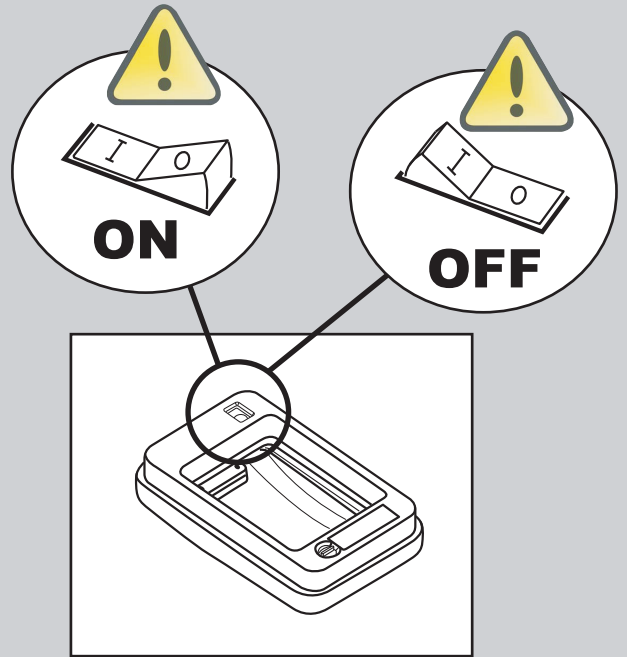
PAPELERAS SENSOR _ DUSTBIN SENSOR POUBELLE AVEC CAPTEUR - LIXO COM SENSOR



Li-ion battery
(rechargeable)
3.7VDC --- 2200mAh



6 MESES / MONTHS / MOIS / MESES
0 / OR / OU / OU
3.600 CICLOS / CYCLES / CYCLES / CICLOS



Para consultar la garantía u otra información relativa a este producto, visitar nuestra web:
For a warranty or other information on this product, visit our Web address:
Pour obtenir une garantie ou d'autres informations sur ce produit, visitez notre site web
Para garantia ou outras informações sobre este produto, visite o nosso site
Для получения гарантийной или другой информации, связанной с данным продуктом, посетите наш веб-сайт:



noken
PORCELANOSA BATHROOMS

Ctra. Villarreal-Puebla de Arenoso (CV-20) km. 2
P.O./box 372 - 12540 Villarreal (Castellón) Spain

Tel: +34 964 50 64 50 _ Fax: +34 964 50 67 92 _ www.noken.com _ noken@noken.com